



Buddhist Tzu Chi Charity Foundation
Annual Report

20

22

2022.1.1~2022.12.31

Spread Kindness to the World with Eternal Love

Since its founding

56 years ago,

Tzu Chi charitable aid footprint
has reached **128** countries
and regions,

with Tzu Chi volunteers
across **67** countries
and regions.



Charity is the foundation of Tzu Chi.

It is the belief in which Tzu Chi strives to embody when faced with challenges.

Humanitarian innovation, global solidarity, digital transformation, and youth engagement were the guiding principle for Tzu Chi's charitable work in 2022, as well as the source of Tzu Chi's sustainability.

In this world full of calamities caused by man and by nature, such as pandemics, conflicts, and environmental crises, we need the power of more acts of kindness.

Tzu Chi is grateful for the support of all our donors and the assistance of our partners.

Let us shoulder the collective responsibility to create a better future.

We have supported construction of

21,676 Great Love houses

in **17** countries and regions.

We have supported
construction of

247 schools

in **16** countries
and regions

Provided **17,802**
free clinics held

in **58** countries / regions,

treating over **3.77** million people.



Tzu Chi has also distributed

150,180 metric tons
of rice in **19** countries

COVID-19 Care Action 2020-2022

Donated **52.27** million pieces of
medical and anti-epidemic materials
in **98** countries/regions.

Provided relief assistance that has
44 countries/regions
to **5.34** million families/
21.72 million people.



and donated **1,336,468**
disaster relief blankets

in **46** countries and regions.

Content

1 Words From Our Founder 3

2 Words From Our CEO 5

3 Global Philanthropy 7

Action 1 : Eradicate Poverty and Hunger	13
1-1 Taiwan Poverty Alleviation	14
1-2 International Poverty Alleviation Efforts	21
Action 2 : Climate Change and Humanitarian Aid	31
2-1 Taiwan Disaster Relief Builds a Resilient and Sustainable Homeland	31
2-2 Overseas Disaster and Humanitarian Relief	37
Action 3 : Declining Birthrate and Aging Care	43
3-1 Cultivate Young People to Build the Future Together	43 50
3-2 An-Mei Project for Elderly Care	

Action 4 : Ecological Conservation and Environmental Education	53
4-1 Initiatives and Actions — Net Zero Carbon Emissions	53
4-2 Tzu Chi's Environmental Protection — Creating Public Welfare and Social Influence	55
4-3 Environmental Education and Advocacy	57
Action 5 : Global Partners and Sustainable Development	59
5-1 Cooperation for Common Good and Sustainable Future	59
5-2 Tzu Chi's Discourse, International Accreditation	64

4 Income and Expenditure

67

1 Donation Income	67
2 Income and Expenditure Description	68
3 Taiwan Charity and International Charity Spendings in 2022	69

Invite you to join



Tzu Chi Global
Official Website



Tzu Chi
Official Line

Words From Our Founder

Only when the seasons of the earth are in balance and the interactions between people are harmonious can we live blessed lives.

Recently, I have often used the word “indescribable”; it is impossible for me to express my feelings of sadness. The elements of nature, earth, water, fire and wind, are out of balance, and impermanence changes everything in the blink of an eye. Around the world, disasters are becoming more and more frequent, and many countries have been devastated. Living in peace and safety is the greatest blessing, but unfortunately, people’s thoughts often go astray, resulting in conflicts and wars that bring about millions of broken homes, family members separated from each other, and deaths.

What is the value of life? Coming to this world, do we know why? Many people don’t know how to do something of value in life, and end up acting in spite of themselves. I am grateful that, while I was still young, a thought stirred in my mind, leading me to become a Buddhist monastic and establishing Tzu Chi.

For the sake of one great cause, the Buddha came into the world over 2,500 years ago. He gave the teachings about the Four Noble Truths, the Twelve Links of Interdependent Origination, and the Six Perfections in order to transform sentient beings. My teacher, Venerable Yin Shun, only gave me two simple phrases: “For Buddha’s teachings, for sentient beings.” At my current age, I believe that I have fulfilled these instructions.

The Buddha’s wisdom permeates the universe; it is absolutely boundless and immeasurable. The Buddha’s mind is limitless, and his thoughts, concepts, and wisdom have been transmitted from generation to generation. The Jing Si Dharma Lineage comes from the Buddha’s teachings, and its spirit must also continue to be passed on to future generations. This is the meaning of working “for Buddha’s teachings.”

The Jing Si Abode in Hualien, Taiwan is the home of Tzu Chi volunteers worldwide, and the monastics of the Jing Si Abode are the support for Tzu Chi’s missions. Tzu Chi’s volunteers are not necessarily Buddhists, but operating as “Buddhist Tzu Chi Foundation,” they are globally recognized and praised for doing the charitable work of Tzu Chi. In order for people to feel that Buddhists have an open mindset that doesn’t distinguish between religions and can embrace everyone in the world, Buddhist monastics must demonstrate a spirit of unity and harmony.

We must not engage in spiritual cultivation only to benefit ourselves, but for the sake of spreading the Buddha’s teachings. To accomplish this, we need to engage with people in society ; only then will we realize just how vast our own hearts are. To assess the value of our lives, we shouldn’t just rely on our own evaluation but also on the testimony of others. We are the ones responsible for both the health of our body and the wisdom of our mind. In our daily living, our interactions with others should be harmonious, caring, and polite. Only when we practice gratitude, respect, and love can we be considered true spiritual practitioners.

The Tzu Chi School of Buddhism works “for sentient beings,” for people and society without distinctions of religion, ethnicity, or nationality. There are many suffering people in the world; one person cannot make much of a difference, nor can a small number of people. We need a large number of people who together walk the path of the bodhisattvas. The great bodhisattva path is not only for the sake of people in the future, but also to pave the way for ourselves.

There is a saying in Buddhism, “Bodhisattvas arise for the sake of suffering beings.” Every day, we can see on



慈濟慈善事業基金會

創辦人 釋證嚴

international news how disasters suddenly change mountains and rivers, and how human life is fragile and impermanent. As a disciple of the Buddha, I must take on responsibility for the world. When we see and hear of suffering, we must always exert our strength to alleviate this suffering. This is my greatest expectation of Tzu Chi's volunteers.

Tzu Chi walks a path in the world, but its spirit and philosophy come from the Dharma taught by the Buddha. We must embrace the matters of the world with an open mind, and at the same time expand our religious platform, reach out, and go among people to put the teachings into practice. The road ahead is bumpy and difficult, so we must pave this road one step after another until it is paved flat behind us. Then, those who follow us will be able to walk the road very easily.

Tzu Chi has walked this road for over half a century. Even though people come from different countries, with different cultures and lifestyles, everyone needs to join together with the same mindset. We must practice "unity, harmony, mutual love, and concerted effort," and together enjoy the Four-Ingredient Spiritual Soup of "gratitude, understanding, contentment, and acceptance." These are Tzu Chi's teachings, the practices that every Tzu Chi volunteer must learn.

It is said, "People can spread the Dharma, but the Dharma cannot spread itself." The path of the bodhisattvas requires people to pave the way; only when everyone creates blessings can we mitigate disasters. We spread the Dharma for the sake of benefiting sentient beings--the meaning of walking the bodhisattva path is to alleviate poverty and suffering in the world. I wish you all success in your work with Tzu Chi; as long as we have the will, we can spread the Dharma and benefit sentient beings in this world.

"Tzu Chi" works for the sake of this world, and "Jing Si" works for the Dharma lineage. I have dedicated my life to establishing the spirit of the Jing Si Dharma lineage to be passed down to future generations. So, we need to be precise and diligent in our practice. I have also established the missions of Tzu Chi in the world, but we must maintain the spirit of the Jing Si Dharma Lineage in handling the worldly matters of Tzu Chi. Only by working together to create blessings for the world can we enable the Buddha's teachings to live on and help future generations cultivate blessings and wisdom.

Excerpted from the "2022 Tzu Chi Almanac "

Words From Our CEO

I wish to start by expressing my sincere gratitude to you all for your support over the years. It is only through your contributions of money, time, efforts, and love, that Tzu Chi has been able to expand its charitable care to 128 countries and regions across the world.

For 57 years, Dharma Master Cheng Yen has led her disciples to go among people and help those in suffering. Through practical actions of assistance, Tzu Chi's efforts to bring purity to people's hearts, create harmony in society, and reduce the disasters in the world have never stopped.

Even with the gradual reduction of the threat of COVID-19 in 2022, numerous disasters of various scales continue to occur along with the worsening climate change. Millions of Ukrainians have become refugees due to the Russia-Ukraine war, which has also exacerbated the energy crisis and led to food shortages and inflation. These problems are of great concern for people worldwide, and are also a focus of Tzu Chi's charitable work.

When the Russia-Ukraine war started, Tzu Chi volunteers from twelve countries mobilized to Poland to assist Ukrainian refugees. By collaborating with eleven international NGOs, Tzu Chi's humanitarian assistance has reached refugees in Ukraine and eight neighboring countries, providing shopping cards, cash value cards, winter supplies, health and medical care, medical supplies, language training and children's education, psychological and legal consultation, individual financial subsidies, and more. Altogether, over 1.78 million people benefited from these efforts in 2022 alone.

In response to the problems and challenges caused by the changing global situation, Tzu Chi is working to be a constructive and benevolent societal influence. The seventh Tzu Chi Forum held in October focused on solving societal problems under the recovery from COVID-19. Discussion topics included how to reach net zero carbon emissions, how to foster intergenerational collaboration and equality among generations, and how to engage multidimensional global and local actors in collaborations to bridge the digital and economic divides.

In Taiwan, Tzu Chi has signed memorandums of cooperation with twenty-two counties and cities in Taiwan and sixteen central and local professional institutions at all levels to form a comprehensive disaster relief work chain for disaster prevention, reduction, and preparedness. We also joined the "Taiwan Digital Health Industry Development Association," led by the Industrial Technology Research Institute and Hon Hai Group, to protect the health of the elderly in rural areas, vulnerable families, and those living alone, with the goal to gradually ensure that both individuals and communities can live healthy and fulfilling lives.

Tzu Chi was approved by the National Fire Agency, Ministry of the Interior as a disaster prevention training institution in 2020. In 2022, an emotional care worker training system was established to complement disaster prevention expertise with emotional care skills. In 2022, we launched the "Plantarium" vegetarian concept space in Taipei as a trailblazer in strengthening the vegetarian food trend, especially among young people. We also organized the first Tzu Chi International Youth Association (TIYA) Sustainability Annual Conference and an International Youth Leadership Training Program to strengthen the leadership of youth in sustainability issues.

As part of its "glocalization" strategy, Tzu Chi participated in sixteen United Nations and international

platform meetings and collaborated with over twenty international non-governmental organizations. By working with well-reputed charitable, religious, and humanitarian relief organization partners, aid operations can be completed quickly and efficiently even in complex political, economic, and epidemic situations. Tzu Chi's charitable work, which included international poverty alleviation, epidemic prevention assistance, refugee care, education assistance, disaster relief and reconstruction, free medical consultation, and cash assistance, reached 57 countries and regions in 2022 alone.

Following Venerable Yin Shun's words to work "for Buddha's teachings and for sentient beings," Tzu Chi volunteers from Malaysia and Singapore went to India and Nepal to "give back to the Buddha's homeland." In the impoverished villages surrounding famous Buddhist pilgrimage sites, the plight of life and the lack of medical care and education are very serious. Tzu Chi has engaged in events ranging from epidemic prevention and poverty alleviation to assisting local communities by constructing free clinics, dialysis centers, and children's homes.

In another milestone, the U Theatre and the Tang Mei Yun Taiwanese Opera Company together with nearly 20,000 Tzu Chi volunteer performers staged the world premiere of "The Essence of the Lotus Sutra" at the Kaohsiung Arena. The sutra adaptation reflects the wisdom revealed by the Buddha over 2,500 years ago, as well as the concept of universal love displayed by Tzu Chi volunteers and donors worldwide.

The main theme for the 2023 Global Risk Report from the World Economic Forum is "Today's Crisis, Tomorrow's Catastrophes." In the spirit of transformation in the present to prepare for the future, Tzu Chi's strategy includes a "Net Zero carbon emissions" initiative that will reduce greenhouse gas sources and concretely increase green energy production, as well as plans to further improve governance and information transparency and to expand the participation of youth and the public in charitable endeavors. Our strategy is fully aligned with the United Nations Sustainable Development Goals (SDGs), and will strengthen Tzu Chi's Environment, Society, and Governance work (ESG) and Social Corporate Responsibility (CSR) reporting. By focusing on four key areas: establishing systems and strengthening governance, transmitting the good teachings and cultivating talents, cultivating global partnerships for the common good, and working toward information optimization and finance revitalization, we continue to work together for the sustainability of the earth and humankind.



慈濟慈善事業基金會

執行長

顏博文

CEO of Buddhist Tzu Chi Charity Foundation
Po-Wen Yen

Global Philanthropy

How did we collaborate for the common good after COVID-19? How can we establish a network of mutual assistance through altruism?

The impact of climate change and natural disasters on global economic and social development has been substantial. Environmental issues such as food shortages, water scarcity, air pollution, and poor waste management have been exacerbated, posing a significant threat to people's lives. An Intergovernmental Panel on Climate Change (IPCC) report indicated that approximately 3.3 to 3.6 billion individuals live in climate-vulnerable regions worldwide.

In response to these pressing issues, Tzu Chi is committed to philanthropic innovation and cross-border partnerships. We closely collaborate with international charitable organizations to implement humanitarian relief initiatives. Our aim to help alleviate the stress on affected communities by providing necessary supplies and resources and helping them rebuild their homes.

Tzu Chi also works to mitigate the impact caused by natural disasters to local inhabitants by promoting disaster prevention and reduction awareness and education. The goal is to overcome existing obstacles and accomplish the objective of global sustainable development via cross-sectorial cooperation and collaborations. Additionally, we work towards reducing greenhouse gas emissions and safeguard the environment. This includes initiatives such as advancing sustainable development and green energy through technological innovation and research, advocating environmental consciousness, encouraging individuals and organizations to minimize the use of single-use plastics and other environmentally detrimental products, and raising overall awareness and attention towards environmental protection.

Relief and Rescue Actions			Disaster Relief		Rice Aid	
Africa.	Asia.	Americas.	Africa.	Asia.	Africa.	Americas.
Zimbabwe	Nepal	Guatemala	Uganda	Pakistan	Eswatini	Guatemala
Zambia	India	Dominican Republic	Mozambique	Bangladesh	Zimbabwe	Honduras
South Africa	Russia	Honduras	Sierra Leone	Malaysia	Botswana	Haiti
Uganda	Jordan	Bolivia	Madagascar	The Philippines	South Africa	Sint Maarten
Namibia	Thailand	Haiti	Americas.		Mozambique	
Malawi	Sri Lanka	Chile	Mexico		Lesotho	
Mozambique	Laos	Sint Maarten	United States			
Sierra Leone	Myanmar	Mexico	Ecuador			
Lesotho	Lebanon	Ecuador				
Ethiopia	Bangladesh	Paraguay				
Eswatini	oceania.					
	Saipan					

In 2022, Tzu Chi undertook charitable endeavors spanning from Taiwan to 57 countries and regions across five key areas: "alleviating hunger and poverty," "addressing climate change and providing humanitarian aid," "caring for declining birth rates and aging populations," "promoting environmental protection and education," and "fostering global partnerships and sustainable development."

2022 Overseas Aid Program (Countries/Regions)

4
Medical
equipment
assistance

450
Cases

18
Pandemic
prevention
equipment

3,074,017
Cases

11
Disaster
Relience

392,929
people benefited

4,373
volunteer mobilizations

32
Relief and
Rescue Actions

1,360,294
people benefited from
the assistance and
rescue operations

91,175
volunteer mobilizations

13
Refugee Care

3,152,876
people benefited

41,738
volunteer mobilizations

10
Rice provision

851,281
people benefited

40,624
Volunteers mobilizations

- Volunteer mobilization is calculated as volunteer per day, meaning a volunteer could be calculated more than once.

Medical Equipment Assistance	Epidemic Prevention Materials		Permanent housing reconstruction	Refugee Care
Asia. Bhutan India Thailand Sri Lanka	Africa. Mozambique oceania. Australia Solomon Islands Americas. United States Paraguay Europe. Poland Italy Germany	Asia. Malaysia The Philippines Thailand Bhutan Indonesia Cambodia Singapore Laos India Russia	Africa. Mozambique	Europe. Serbia Ukraine Poland Czech Slovakia Italy Croatia Bulgaria Romania Moldova
			School Reconstruction	Asia. Jordan Turkey Thailand
			Africa. Mozambique Americas. Mexico	



22 County/City
327,578 Home(s)

Support for Disadvantaged Families

22 County/City
18,980 Case(s)

Tzu Chi's Environmental Protection Aids



Emergency Assistance

21 County/City **19,764** Home(s)

Community Emergency Care

21 County/City **177** Home(s)

Permanent Home Redevelopment

1 County/City **95** Home(s)

Post-disaster Home Repair & Reconstruction

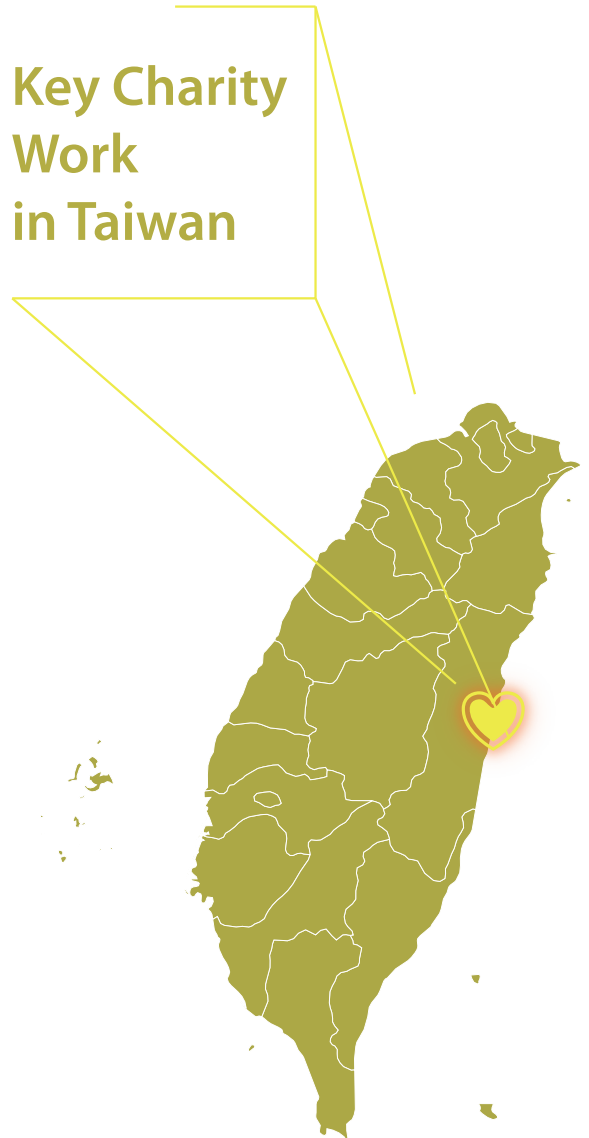
2 County/City **196** Home(s)



Epidemic Prevention Materials

21 County/City **838,799** Case(s)

Key Charity Work in Taiwan



20 County/City
501 Case(s)
House Renovation

16 County/City
1,026 Home(s)
**Home Security
Improvements**



Long-term Home Care Agency

14 County/City **18** Site(s)

Long-term Day Care Agency

6 County/City **11** Site(s)

Long-term A Unit

10 County/City **21** Site(s)

Long-term C Base

17 County/City **11** Site(s)



Free Clinic Services

11 County/City **109** Site(s)



Scholarships

21 County/City **22,913** Student(s)

**Support for
Disadvantaged Children**

12 County/City **188,051** Student(s)



**Social Welfare
Organization Care**

17 County/City **929** Qty.

Community Care Bases

13 County/City **88** Site(s)

The 2022 work implementation results

	Key Focus and Aid Actions	No. of Beneficiaries & Service Recipients	No. of Volunteer Mobilization Times
 Social Assistance	<ul style="list-style-type: none"> Eradicate Hunger and Poverty Global Partners and Sustainable Development 	8,506,339	2,183,999
 Disaster Relief	<ul style="list-style-type: none"> Eradicate Hunger and Poverty Climate Change and Humanitarian Aid Global Partners and Sustainable Development 	2,955,211	21,300
 Scholarships	<ul style="list-style-type: none"> Eradicate Hunger and Poverty 	22,913	39,255
 Youth Welfare	<ul style="list-style-type: none"> Youth Support and Cultivation 	1,400,128	105,050
 Senior Welfare	<ul style="list-style-type: none"> Aging Society Care Action 	1,554,132	9,248,768
 Welfare Community	<ul style="list-style-type: none"> Eradicate Hunger and Poverty Environmental and Ecological Protection and Education 	6,563,365	1,129,721
 Volunteer Service	<ul style="list-style-type: none"> Eradicate Hunger and Poverty Global Partners and Sustainable Development 	6,074,612	932,644
 Educational Mission	<ul style="list-style-type: none"> Environmental and Ecological Protection and Education Global Partners and Sustainable Development 	48,706	9,288
	Total	27,125,406	13,670,025

Calculation basis: the number of volunteer mobilizations x NT\$742 per person.
 Reference: In 2022, the basic hourly salary is NT\$168 (calculated for 4 hours), the missed meal fee is NT\$70, and the number of volunteer mobilizations is calculated as one person per day. The calculation excludes domestic and foreign transportation, accommodation expenses, and volunteers' personal spending money during the time period.

13,670,025 volunteer mobilizations, equivalent to an economic contribution of **NT\$10.1 billion** (NT\$10,143,148,550)

Through the accumulation of long-term charity work experience, our mission remains the same as we continue to innovate.

For disaster relief, Tzu Chi has systematically established a disaster relief chain that covers disaster prevention, disaster reduction, disaster preparedness, disaster response, recovery, and reconstruction. We have also signed memorandums of cooperation with over 16 central ministries & academic institutions and 22 local governments to simultaneously improve the disaster prevention and relief profession while expanding the scope of care.

Through our environmental programme, Tzu Chi has evolved our environmental protection station from environmental care to include social care, practicing sustainable living and a place for people from all ages to contribute. Using SROI, we are able to quantify the influence and contribution of Taiwan's environmental protection work on the social integration.

On philanthropic innovation, our foundation provides social charity services and aims to bolster public welfare. In 2017, we launched a social entrepreneurs start-up project with a goal to build a platform for youth start-up and providing mentorship, creating the first youth social innovation incubation platform in Taiwan.

Since 2015, we have published sustainability reports and adopted GRI indicators as a tool for self-management and inspection. Internally, we have continued to examine our system to determine the path of future improvement. Externally, we have used the public's language and expectations to connect with international indicators and share past accomplishments, current investments, and future visions with public welfare supporters.

The 2nd "TSAA Taiwan Sustainable Action Award" in 2022

<p>03 GOOD HEALTH AND WELL-BEING</p> 	<p>NGO Silver Award</p> <p>Tzu Chi Taiwan Environmental Protection Campaign</p>	<p>08 decent work and economic growth</p> 	<p>NGO Gold Award</p> <p>Youth Welfare Charity Action</p>	<p>09 Industry, Innovation and Infrastructure</p> 	<p>NGO Gold Award</p> <p>Disaster Prevention, Sustainability, & Cooperation for Common Welfare</p>
--	--	---	--	---	---



The 15th "Taiwan Corporate Sustainability Award" in 2022

<p>Sustainability Report Award Best Report of the Year</p>
<p>Sustainability Unilateral Performance Award</p>
<p>Second Category Silver Award</p>



<p>Social Inclusion Leader</p> <p>Constructing Social Inclusion using a Charity Network Jointly Create a Friendly Community</p>	<p>Innovation Growth Leader</p> <p>Cultivate a Disaster Prevention and Rescue Mechanism Connecting Community Safety Networks</p>	<p>Creative Communication Leader</p> <p>Online and Offline Connections Tzu Chi Promotes National Awareness of Environmental Protection and Disaster Prevention</p>
--	---	---



Action 1 Eradicate Poverty and Hunger

Poverty and hunger eradication stand as paramount goals for global philanthropy.

The underlying catalyst for famine resides in the imbalanced and unjust global development. Perturbing events such as droughts, floods, and hurricanes, exacerbated by climate change, alongside human-induced catastrophes like conflicts and economic downturns, coupled with the relentless expansion of the global population, collectively fuel the specter of famine. These dynamics amplify the jeopardy faced by impoverished individuals striving to secure adequate nourishment. Therefore, we are actively engaged in multifaceted aid and sustenance initiatives to empower individuals in reclaiming their self-sufficiency.

Affirmative Action for Disadvantaged Families



Assisted **1,151,908** people | **1,912,627** volunteers mobilizations

Assisted **126,470** households with living allowances for economic relief.

Offered home care services to **201,276** families.

Improved home environment for **1,530** households

Provided long-term medical care subsidies to **4,118** households



Shared warming gifts with **28,098** families to bring in a joyful New Year

Extended care during festivals to **45,551** households

Provided emergency subsidy to **19,764** families to survive emergencies

Provide funeral subsidies to **1,263** households



1-1 Taiwan Poverty Alleviation

We adopt a holistic approach, known as the "comprehensive individual, family, and process" care model, to safeguard family members and marginalized groups within the community. Our strategy encompasses a continuum of support and assistance, addressing challenges spanning all life stages, from birth to old age. By working together to overcome challenges, we foster self-reliance and self-development. Moreover, our efforts extend to furnishing spiritual solace and alleviating both physical and emotional burdens, culminating in enhanced self-esteem, a constructive life outlook, and collaborative endeavors in shaping a harmonious, stable, and thriving community.

Key Care Initiatives:

1. **Alleviating Financial Strain:** We extend economic support and a range of diverse services to alleviate the burdens faced by the impoverished.
2. **Holistic Health Approach:** We subsidize medical expenses and provide care interventions aimed at eradicating the intersection of poverty and ill-health.
3. **Educational Empowerment:** Through tuition subsidies and scholarships, we empower disadvantaged students, ensuring they gain access to quality education.
4. **Vocational Support:** We offer vocational training to reskill and empower the unemployed, facilitating their reintegration into the workforce.
5. **Holistic Well-being:** We provide social services, including spiritual care, to assist those in need in relieving physical and psychological distress.

Education Poverty Eradication Affirmative Action

Assisted
237,352 disadvantaged students

Awarded scholarships and subsidies to

22,913 students

Offered nutritional food subsidies to

92,497 people

Provided tutoring services to

84,756 people

Supplied diversified learning subsidies to

37,186 individuals for courses related to talents, professions, and career development

Community Charity Care Actions

Benefited **598,184** people,
and **97,711** volunteers joined

Care subjects

929 students from social welfare institutions, low-to-middle-income households, people with disabilities, women in need, new residents, foreign fishermen, homeless individuals, and residents from remote and indigenous villages

Care items

Visits, video conference care, economic subsidies, livelihood assistance, livelihood development, charity agriculture, free clinics, clinic visits, health promotion, and public welfare cooperation

According to Tzu Chi's analysis of long-term care family data, single-parent families constitute 26%, small families account for 21.1%, elderly one-person households comprise 14.6%, single-person households make up 14.1%, and intergenerational education families represent 4.4%. The challenges faced by low-income families often stem from the convergence of various factors. Each family and life stage encounters distinct difficulties and trials.

Tzu Chi places a strong emphasis on continuous care. To assist families in maintaining their livelihoods and alleviating financial stress, Tzu Chi extends economic support and philanthropic services. By fostering positive connections and building trustworthy relationships with family members, we aim to offer aid to individuals, families, and communities. Moreover, we provide vocational training and educational subsidies to boost self-esteem, broaden career prospects, enhance income, and address psychological and social needs of family members. Our objective is to comprehensively assist them, helping restore their self-assurance and independence, ultimately guiding them towards self-reliance.

Tzu Chi's Holistic Assistance for Vulnerable Families

Challenges Faced by Families

Our Assistance Approach

Supporting Seniors

- Financial struggles
- Lack of companionship and care
- Unsafe living conditions
- Ongoing medical expenses and requirements



Elderly Care

- Financial aid and companionship
- Improve residential safety
- Nutritional support/love meal
- Health promotion/social participation
- Long-term care service application for seniors with disabilities

Midlife Struggles

- Sudden loss of main income provider due to injury, illness, disability, or death
- Inadequate work income
- Unhealthy living environment
- Unexpected accidents
- Family medical care, education, and care needs



Family Support

- Short-term emergency subsidies
- Medical subsidies
- Long-term economic subsidies
- Material assistance

Education Barriers

- High tuition burden and miscellaneous costs
- Limited academic progress
- Unhealthy living habits
- Limited learning resources



Shine with You

- Tuition and miscellaneous expenses subsidy
- New Sprout scholarship incentive
- Life education
- Supplement course and talent support
- Professional and career development

Childhood Development

- Families with many children or young children
- Insufficient parenting education
- Inadequate nutrition during growth stages



Grow Up with You

- Nutrition provision
- Financial support
- Accompany the family to grow

The cabin under National Highway No. 6

Numerous challenges grip Taiwanese society, stemming from factors like the economy, health issues, and family dynamics. A prime illustration is Mr. Lin, aged 64.

Originally a formwork engineer, Mr. Lin's life took a turn following the September 21 earthquake. Struggling to receive wages and pay rent, he was introduced by a friend to work on a construction site in the Nantou mountain region, which his family was also offered a dormitory to reside in. After the project concluded, the employer gave the dormitory to his family to live in. Mr. Lin used the leftover construction materials to build a fragile wooden dwelling, which they called home for two decades.

The heavy lifting required from formwork led Mr. Lin to develop spinal disease and nerve compression. For many years, he grappled with incontinence, relying on a urine bag, and suffered liver and kidney damage due to long-term medication. Meanwhile, his wife's health was also significantly affected due to diabetes. She lost her vision in both eyes, had her right foot amputated, and became so frail she could hardly walk. She requires renal dialysis every week, and is dependent on their son for daily assistance.

Upon learning of the Lin family's dire situation, the village chief promptly contacted Tzu Chi. A team of volunteers and social workers quickly visited the family to provide support.

Due to his ailments and old age, Mr. Lin couldn't resume his formwork occupation. Their son, since junior year, had drop out of school to care for his parents. He juggled odd jobs to supplement the family income. Tzu Chi volunteers asked him about his interests and aided him in acquiring a professional engineering machinery driving license, and furthermore, encouraged him to continue and receive excavator operation training.

Such assistance resolved immediate issues and paved the way for their future. Mr. Lin's family is profoundly thankful for Tzu Chi's care and support. He expressed, "It's great to have Tzu Chi. I will join my fellow volunteers in serving others."

Assistance Highlight

Charity Material Card

Tzu Chi provided charity material card, enabling immediate purchases of essentials like food, diapers, nursing pads, and other necessary supplies to alleviate daily pressures.

Medical Aid

Mr. Lin was referred to Taichung Tzu Chi Hospital for comprehensive diagnosis and treatment. A detailed medical plan was devised for his ongoing care.

Improved Living Conditions

Given the family's illnesses and their current remote, rundown dwelling, Tzu Chi located a more suitable residence. Volunteers facilitated the move, provided furnishings, and constructed barrier-free ramps.

Livelihood Development

Encouragement and assistance were extended to the family provider, supporting skill acquisition and subsidizing the examination fee for obtaining licensing.



Extending Scholarships and Subsidies to Cover Educational Expenses

In times of adversity, the burden feels insurmountable when faced alone, yet it becomes a beacon of hope when confronted together!

Here is the story of Student Tsai.

Raised in foster homes and childcare centers without the presence of relatives, he encountered an additional hurdle and his schooling experience became more difficult when his father passed away during his junior high school years. Nevertheless, he held onto his father's parting words, "Stay on the right path

and strive for education."

Despite life's pressures, Student Tsai persevered by working part-time to cover living expenses while pursuing his studies. With the aid of Tzu Chi, he was able to continue his university studies, fulfilling a promise to his late father that was tinged with regret of not being able to attend school himself.

Reflecting on this support, Student Tsai said, "Tzu Chi helped me with tuition fees, which significantly reduced financial pressures." The care of the volunteers also made him feel the warmth of home.

Responding to volunteers' invitations, he participated in caring visits alongside them. Witnessing the resilience of older individuals confronting life's difficulties head-on, Student Tsai found reinforcement for his conviction: "When faced with difficulties, don't give up lightly. As long as you work hard, you can see hope!" "work hard, you can see hope!"



The New Sprout Scholarship is comprised of five district honors: Perfect Attendance, Filial Piety, Best Progress, Academic Achievement, and Special Achievement Awards. The very title "New Sprout" is an inspiration for students to blossom and prosper, akin to fresh shoots. It signifies their growth towards a resilient, prosperous, and bright future.



**Tzu Chi Long-term Care Journey
A decade later, she secured a place at
the National Taiwan University College
of Medicine.**

**"Guan Hua! Tzu Chi volunteers
are here!"**



Over the past 10 years, such exchanges have been commonplace. Yet, on Christmas Day 2022, there was an extra sentence "Congratulations on your acceptance to the National Taiwan University College of Medicine!"

Changhua District's Tzu Chi volunteers brought joy and warmth to her household to celebrate this remarkable milestone. The volunteers have stood by her side for a full decade, witnessing her journey until her admission into the National Taiwan University College of Medicine.

A senior at high school, Student Huang's parents divorced when she was a child, and she lived with her mother and grandparents. Despite financial hardships and her mother's enduring health struggles, which necessitated long-term medication and occasional hospital stays, she remained vibrant and spirited, refusing to give in to the challenges she faced. Notably, she obtained a street performer's license in elementary school and earned the prestigious Presidential Education Award in 2015.

Expressing gratitude, she acknowledged Tzu Chi's pivotal role in her life. Their assistance facilitated the purchase of reference books and admission into a reputable high school. With a heart full of aspirations, she envisions following in the footsteps of Tzu Chi volunteers, extending her reach overseas to provide free clinics. She dreams of offering support to children in need, much like she once was, and extending care to those enduring hardships.

Providing Warmth and Companionship to the Homeless on a Cold Night

“Do you have food?”

He sat up and replied, "Not three meals, but I manage to have two a day."

According to the weather report, the temperature in Taiwan was predicted to drop below ten degrees on December 17, 2022, with there was a possibility of snow in the mountains. On the evening of the 16th, volunteers took to the streets equipped with hats, socks, hygiene essentials, warm packs, coats, scarves, sleeping bags, and other items to provide warmth.

At Xizhi Railway Station, Mr. Zheng lay curled up on the sidewalk flanked by plastic bottles, cardboard boxes, and other recycled materials, his feet swollen, exposed to the elements. A volunteer unpacked 2 hand-warmer packs and slipped them into his coat.

“Do you have food?” He sat up and responded, "I don't always have three meals, but I manage two." Volunteers removed hats, socks, and warm packs from their winter supplies bags. Gradually lowering his guard, Mr. Zheng shared how his house had collapsed, forcing him to take shelter at the station temporarily. His wife abandoned him after just two years of marriage. Mr. Zheng had also faced mistreatment from colleagues at work in which a fight led to a two-year prison sentence. After his release, fear kept him away from home. "I can only manage part-time work when my health allows," he confessed due to his ailing condition.

In Taichung, by the "Railway Cultural Park" square in front of the train station, a small enclave offers some reprieve from the biting wind. Blankets, cardboard pieces, clothes, food, and scattered belongings compose this makeshift "home" for the homeless.

Dr. Bang-Jie Ji, from the Tzu Chi International Medical Association, along with 41 volunteers and colleagues from the Taichung Homeless Care Association, distributed warm noodle soup, tea eggs, snacks, cakes, coats, gloves, scarves, fur hats, and other warming supplies to share with the homeless.

Mr. Xie, who resided on the streets of Tainan for reasons known to him, usually scraped by with odd jobs. An old injury resurfaced, hindering his ability to work. After receiving request from the Social Bureau, Tzu Chi volunteers extended aid by facilitating medical treatment and addressing his naturalization and housing concerns. They also found a one-story house, helped him clean up, and transformed it into a comfortable space for Mr. Xie and other elderly residents living alone.

Volunteers found that the other tenants living there were 60 to 80-year-olds, each living independently. Due to the absence of a water heater, they had to heat water in their rooms before carrying it to common restrooms for bathing. To improve safety, volunteers installed outdoor water heaters, ensuring a more secure bathing experience for everyone.



Compassionate Warmth: Hualien's Pioneering Mental Health Services Hub

Within the mentally disabled population, 87.6% are confined to constrained community settings, imposing immense caregiving pressures on their families.

In response, the Social and Family Affairs Administration under the Ministry of Health and Welfare, initiated the second phase of the social safety net plan. This endeavor aims to establish 49 "cooperative model service bases for the mentally handicapped" across Taiwan, each catering to a county or city, to furnish comprehensive care services.

On December 23, 2022, Tzu Chi took charge of Hualien County's first cooperation base for the mentally, aptly named "Compassionate Warmth Center." The center's mission is to fortify and amplify community-based service resources for those grappling with mental health issues, enhancing their social integration, nurturing self-sufficiency, and alleviating the burden borne by caregivers.

Weekday Activities

Growth Groups/Courses

Hosting Community Events

Outreach Services

Career Link Services

Partnership Support



1-2 International Poverty Alleviation Efforts

Relief and Rescue Efforts

Tzu Chi members operate across **32** countries and regions,

effecting widespread positive change:

1,360,294 people benefited,

91,175 volunteers mobilized

Living expenses support, nutritional support, livelihood support, water resource planning, sanitation care, health care, environmental sustainability projects, carbon-reduction stove construction, etc.

Extreme weather patterns exacerbate crop losses, decreased productivity from agriculture and forestry, hike food costs, and amplify disease outbreaks and economic setbacks. The World Bank forecasts that climate change will propel 132 million individuals into extreme poverty by 2030. Vulnerable populations such as outdoor urban laborers, the impoverished, the disabled, the elderly, and children will bear the brunt of heightened temperatures resulting from climate change. Those who grew up in impoverished conditions, including ethnic groups, will face even greater challenges. Tzu Chi members abroad operate with self-reliance. In regions with limited resources or in the aftermath of major disasters where Tzu Chi members are not present, the Foundation dedicates itself to resource mobilization, strategic collaboration, and amplified care efforts.

Relief through Taiwanese Rice Distribution

10 countries

3,180 metric tons of Taiwan foreign aid rice

851,281 people benefited

40,624 volunteer mobilizations

International Refugee Assistance

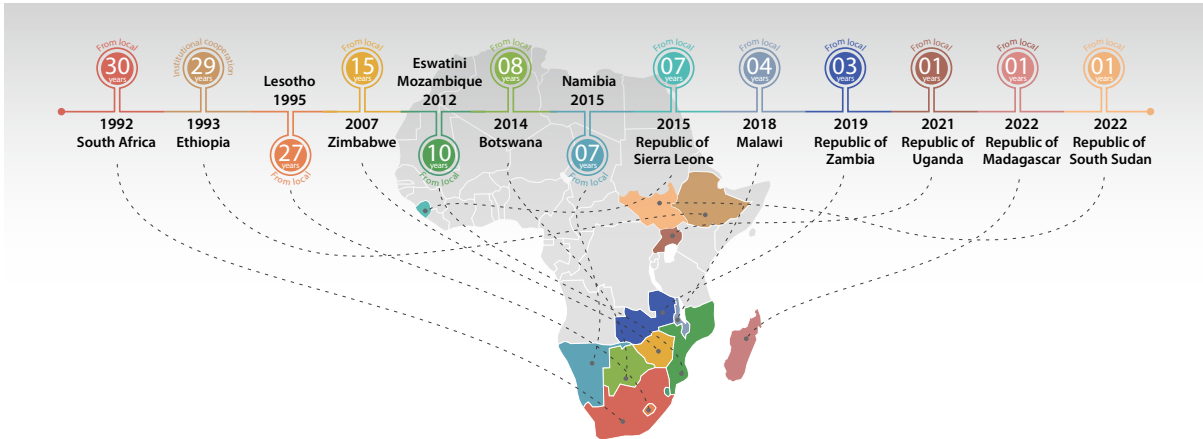
Benefited **1,470,655** people
and **41,738** volunteer mobilizations

Long-term refugee care in Jordan, Türkiye, and Serbia
Living allowances, educational assistance, medical
subsidies, meal supplies, care visits, etc.

Initiatives in Actions:

- (1) Life Support: Community care, individual case assistance, New Sprout student aid, emergency relief, institutional care.
- (2) Nutritional Support: Food station services, and nutritional supplements for children
- (3) Livelihood Development: Vocational training, Da-Ai vegetable garden, and agricultural training
- (4) Water Resource Planning: Well drilling, well repairs, and rainwater collection system installations.
- (5) Hygiene Promotion: Children and community haircuts, family health education, women's health care, and constructing of shared and ecological sanitation facilities
- (6) Healthcare Initiatives: Medical subsidies, and Rehabilitation Center
- (7) Specialized Projects: Refugee care, Da-Ai village construction, school construction/repair, rice distribution, environmental sustainability projects, and carbon-reduction stove constructions





Tzu Chi members are distributed in 9 African countries, and its charity footprints span across 13 countries

South Africa	Ethiopia	Lesotho	Zimbabwe	Mozambique	Eswatini	Botswana
Service Items						
<ul style="list-style-type: none"> • Community care • Rice distribution • Local primary school camp • Food station • Emergency care • In-depth local cultivation projects • Transnational and transregional care • Organization care • Home care • New Sprout scholarship • Jing Si Aphorisms book donation for children • Love vegetable garden 	<ul style="list-style-type: none"> • Medical projects • Relief distribution 	<ul style="list-style-type: none"> • Rice distribution • Home care • Jing Si Aphorisms book donation for children 	<ul style="list-style-type: none"> • Build simple classrooms • Rehabilitation centers • Water purification projects (well excavation, maintenance, water purification) • Community care • Individual case care • Emergency care • Jing Si Aphorisms book donation for children • Love vegetable garden • Food station 	<ul style="list-style-type: none"> • Refugee care • De-Ad Village construction • School construction/renovation • Health education • Second-hand phone distribution • Community care • Individual case care • Emergency care • Second-hand clothing distribution • Rice distribution • Water purification plan • Sustainable energy plan • Jing Si Aphorisms book donation for children • Nutritional supplement program for children • Women's health care program • Construction vocational training 	<ul style="list-style-type: none"> • Love vegetable garden • Food station • Rice distribution 	<ul style="list-style-type: none"> • Rice distribution • Individual case care
Namibia	Republic of Sierra Leone	Malawi	Republic of Zambia	Republic of Uganda	Republic of Madagascar	Republic of South Sudan
Service Items						
<ul style="list-style-type: none"> • Individual case care • Provide food for community orphans 	<ul style="list-style-type: none"> • Organization care • Rice distribution • Living material distribution • Second-hand clothing distribution • Women's health care program • School renovation • Nutrition food funding • Public health aid • Hospital repairs • Donation hospital beds 	<ul style="list-style-type: none"> • Individual case care • House construction /renovation • Emergency care • New Sprout scholarship 	<ul style="list-style-type: none"> • Love vegetable garden • Individual case care • Add food stations • Community care 	<ul style="list-style-type: none"> • Health education • Women empowerment • Water resource aid • Emergency care 	<ul style="list-style-type: none"> • Emergency care 	<ul style="list-style-type: none"> • Food Aid

Mozambique: Cornmeal Relief Initiative

In the wake of drought and inflation-induced economic downturn, Tzu Chi initiated a vital food distribution program in Mozambique. The program focuses on supplying cornmeal to community volunteers and caregivers as a means to alleviate food scarcity.





Lesotho: Community Support

Community and individual care are critical work for local Tzu Chi members. Since 2011, the Taiwanese Council of Agriculture has annually provided foreign aid rice to alleviate impoverished villagers and vulnerable children within the communities.

South Africa: Taiwan Foreign Aid Rice Distribution Efforts

In collaboration with community volunteers in Johannesburg, Tzu Chi volunteers distributed Taiwan foreign aid rice, alongside essential living kits, sugar, salt, beans, and sorghum flour, to Swaneville. The objective is to extend care to disadvantaged families, children, and teenagers within the community.



Zimbabwe: Preventing Tinea Capitis through Free Haircuts

In Zimbabwe, a haircut costs between US\$1 and US\$5, equivalent to a meal's expense for the residents. This becomes an unaffordable luxury for low-income families. Compounded by the lack of water and sanitation, the prevalence of tinea capitis remains high. Tzu Chi volunteers, in conjunction with local barbers, offered complimentary haircuts. At the same time, Tzu Chi set up feeding stations, with the aim to ease financial burdens on families, alleviate nutritional deficiency, and improve health and well-being of the community.



Malawi: Tribal Care

Cyclones Anna and Gombe unleashed fierce winds and torrential rain upon Malawi in January and February 2022, causing the Chigojo Kindergarten in Blanday to collapse. The kindergarten, initially a modest church for the tribe, was transformed by Tzu Chi, catered to 80 children, providing education and meals.

In the aftermath, volunteers embarked on the reconstruction of the kindergarten, with much support from the Chigojo tribe's chief, who rallied other tribes to join the cause. Notably, volunteers constructed a water well, benefiting not only the kindergarten children but the entire tribe.

Supported by the tribe's chief, Tzu Chi secured around 15 hectares of land to promote a farming initiative. Amid the aftereffects of flooding, the fertile soil was plowed with care, eliciting smiles from refugees who view this as the dawn of hope.





South Sudan: Food Aid for Girls' Schools

Narus hosts the only girls' school in South Sudan, the St. Bakhita's Catholic School for Girls. Beyond education, it shelters numerous girls escaping gender inequality and child marriage. In October 2021, the school confronted food shortages. By February 2022, Mercy Beyond Borders, a charitable organization, sought Tzu Chi's support. Starting in April, Tzu Chi supplied nutritious food, ensuring the school's operation and enabling these girls to pursue education, thus transforming their futures.

Ethiopia: Food Parcel Distribution

Ethiopia, listed among the United Nations' 46 least-developed nations, grapples with the repercussions of drought and civil conflict. Approximately 30 million Ethiopians need assistance, particularly in terms of sustenance and clean water. Collaborating with the charitable organization, Kidmia Mahiber, Tzu Chi extended aid to local refugees. The efforts encompassed: (1) aiding 1,000 families affected by civil war in towns such as Shewa Robit and Ataye with one month's food supply, (2) assisting two refugee camps in Debre Birhan by providing nutritional food parcels and one-month snacks and lunches for 1,158 school children.



Uganda: Carbon Reduction Cookstove Initiative

Commonly used in rural areas, "three-point stoves" constructed from three stones and one stove are fuel-intensive and inefficient. Incomplete combustion often generates excessive smoke, leading to burns and scalds, particularly among women and children. Tzu Chi, in collaboration with Love Binti, established carbon-reducing stoves utilizing local materials. Employing the rocket stove principle, these stoves facilitate complete and clean combustion, significantly reducing the risk of burns, choking, and smoke-related health issues, thus safeguarding the well-being of children and mothers.



Embarking on Journeys for Health – India

In Rajagha, India, a poignant photograph of a young boy with a distended belly stirred hearts, prompting action. Where is this little boy? How can we help him? Tzu Chi volunteers, determined to locate him, traversed villages until they found his family.

Sandeep, a nine-year-old boy, is part of a family of ten residing in a modest rural brick house with just one bed. Beyond providing food supplies, volunteers facilitated immediate medical care for Sandeep with medical professionals from Tzu Chi Hospital in Taipei, journeying 1,100 kilometers to Apollo Hospital in New Delhi to assist with his treatment.



The children of Qiaqi Village in Bodhgaya received a simple yet meaningful gift—a pen and a notebook. These tokens of educational support radiate hope and encouragement for a brighter future.

In the Veda Orphan Old Age Home, supports destitute elderly sleeping on the streets, most grappling with illness and hunger. Tzu Chi volunteers extended care, offering food, necessities, and provisions to enhance their well-being and dignity.



Dedicated volunteers from Singapore and Malaysia embarked on the "Nepal Volunteer" project, returning to Buddha's roots to uplift and improve local lives through charitable actions, medical care, and education.

Case care: Providing essential support such as food subsidies and house repairs.

Skills training: Offering skill-enhancing programs like sewing classes and computer courses.

Medical assistance: Extending lifesaving support through free clinic services and medical subsidies.

Educational support: Enabling education through initiatives like home visits to reintegrate children into school, offering student subsidies, and donating school buses.

Constructing simple assembly classrooms to foster conducive learning environments.



A Journey of Change in Nepal: Embracing the Footprints of Buddha

Exploring Buddha's footprints in Nepal led volunteers to a family in need. Sharada, blind since childhood, resided with her husband, who struggled with a mental disorder, and their son, who battled illness-related challenges such as speech and movement. Poverty prevented their healthy daughter from accessing education. Tzu Chi intervened, providing relief and supporting the daughter's education. Focusing on Lumbini, volunteers aimed to elevate local education standards, with initiatives such as distributing backpacks, stationery, and warm clothing to children, fostering appreciation and practical skills. The aim is to teach children the importance of etiquette with practical actions and love.

Tzu Chi initiated large-scale free clinics to address the nexus of poverty and health challenges. Collaborating with the International Buddhist Association's Free Clinic Center, medical professionals provided traditional Chinese medicine, internal medicine, dentistry, gynecology, pediatrics, and ultrasound services. Over 3,277 individuals benefited, underscoring the organization's commitment to holistic well-being.



Provide school buses to ensure students living far away can access education with a sense of security and peace of mind.





Guatemala: Distributing Livelihood Supplies

Before the onset of the COVID-19 pandemic, around 69% of the population was living in poverty, a number that could rise to as much as 80% in rural regions. Over the past two years, the combined impact of COVID-19, volcanic eruptions, hurricanes, droughts, and landslides has resulted in crop failures and has further exacerbated poverty levels. In response, Tzu Chi volunteers distributed essential daily essentials to low-income families and the elderly, aimed at assisting them in overcoming the challenges they face.

Serbia: Refugee Camps and Child Care



Tzu Chi's European volunteers continue in providing care and support to refugees from various nations who find themselves stranded in Serbia. During 2022, a new chapter of our compassionate efforts unfolded as we initiated assistance for the students of Branko Pesic Primary School in Belgrade City after contact from the United Nations High Commission for Refugees (UNHCR). Over 90% of the students enrolled in this school are of Romani descent, and it also caters to refugee children. This marked the first instance in which Tzu Chi extended its reach beyond the refugee camps, distributing stationery supplies to government primary schools. Furthermore, since March, our commitment to the students' well-being has led us to provide them with 300 pieces of bread each day, further nurturing their hopes for a brighter future.



Jordan: Empowering Futures Through Education

For an extended period, Tzu Chi has been dedicated to the well-being of the Home of Compassion, a refuge for single mothers and children from Syria. As these young girls have matured, they are now prepared to harness the power of their acquired knowledge to shape their destinies. Among them, Yasmeen Abduljalel, Reem, and Manar Omar Abbas have all successfully passed their college admission examinations—an extraordinary achievement which has become a source of inspiration for both the mothers and children within the Home. Their accomplishments stand as a testament to the transformative impact of education and empowerment in the face of adversity.



Türkiye: El Menahil Students Join Disaster Relief

On January 23, 2015, the Tzu Chi Foundation established the "El Menahil International School" in Turkey, which successfully completed its accreditation process in 2018. This institution has blossomed into a second home for Syrian refugees in Türkiye, offering not only knowledge but also valuable skills and a sense of compassion nurtured by volunteers. Over the past eight years, these children have been empowered to uncover their potential and shape their futures through education.



The transformative journey took an unexpected turn when, on February 6, 2023, a powerful earthquake struck the Türkiye-Syria region. The very students who had benefited from El Menahil International School's nurturing environment emerged as the leaders of the Turkey-Syria Earthquake Relief Team. This transformative convergence of education, resilience, and service highlights the students' growth into compassionate and capable individuals, ready to make a meaningful difference in the face of adversity.

Action 2 Climate Change and Humanitarian Aid



2-1 Taiwan Disaster Relief: Building a Resilient and Sustainable Homeland

Extreme climates often lead to major disasters. Our efforts are concentrated on enhancing community disaster prevention capabilities, reducing disaster risks, and strengthening community resilience. Alongside rapid disaster response mobilization, we have continued to increase the efficiency of disaster relief, facilitated community recovery following catastrophes, and contributed to the construction of resilient, sustainable, and beautiful communities.

860,226 people benefited **16,927** volunteers joined

Professional Training for Disaster Preparedness

Global climate change and frequent disasters have prompted the need for more timely provision of appropriate charity care and support during disaster events. "Professional Training Accreditation and Government Collaboration" is one of our 2022 Charity Annual Policies.

Tzu Chi trained **4,508** disaster relief volunteers of them
2,194 are Tzu Chi volunteers (updated as of 2023/2/5)

Disaster Preparedness is Tzu Chi's inaugural initiative, having obtained qualification as a training institution and garnering recognition across various sectors. The next step is to cultivate Care Companions, enhancing the professional competence of volunteers and staff in disaster relief and psychological care. Concurrently, proficiency in trauma care and companionship skills will be developed, leading to the acquisition of further specialized credentials. Moving forward, disaster relief will be executed by an integrated team of specialists, ensuring swift and comprehensive aid encompassing charity, medical care, and social support mechanisms.

On January 11, 2023, the World Economic Forum unveiled the 2023 global Risk Report (GRR2023), underscoring that regardless of the global risks over the next 2 or even the next 10 years, natural disasters and extreme weather events will consistently secure a position within the top 3 risks. Over the long term, the challenges of climate change mitigation and adaptation are inevitable issues confronting the human existence crisis. This further implies that disaster prevention efforts will become more complex as the environment deteriorates due to extreme weather. The promotion of disaster prevention and mitigation will consequently face greater difficulties. How can we effectively provide timely and holistic charitable care and support during disasters? This question serves as the focal point of Tzu Chi's charitable efforts in 2022.

2,955,211 people benefited Mobilized **21,300** volunteers

1,580 individuals in Taiwan successfully certified

Care Companions In 2022, under the guidance of the Ministry of Health and Welfare's Department of Social Assistance and Social Work, as well as the Department of Mental Health, along with the social departments of various county and city governments, Tzu Chi collaborated with professional organizations such as the Taiwan Association of Social Work Education and the Republic of China Volunteer Service Association. Together, we initiated the establishment of the "Care Companions" training and certification mechanism. The goal was to continually enhance the knowledge, attitudes, and service skills required for Tzu Chi volunteers and compassionate individuals in disaster prevention, relief, and visits. This initiative aimed to promptly assist disaster victims and their families in finding stability in both their physical and mental well-being. Additionally, it aimed to provide a warm support system for resilient disaster-prepared communities and societal safety nets. In total, 1,580 individuals successfully completed the training.



2-1-1 Community Disaster Relief

2022 Taiwan Epidemic Prevention Care

Following the onset of the new year in 2022, Taiwan experienced its first local case of the OMICRON mutated strain of COVID-19, leading to outbreaks in various communities. Starting from late March, the number of confirmed COVID-19 cases in Taiwan steadily rose. Due to the rapid spread of the mutated virus strains and their wide reach, the epidemic continued to escalate, peaking in May. Even into the third year of the pandemic, Tzu Chi remained committed to swiftly providing assistance in the form of essential epidemic protection materials to frontline prevention units, bolstering epidemic control efforts, and carrying out continuous epidemic prevention and rescue operations.

Delivery of **5 million** of BNT vaccine

844,485 individuals benefited through epidemic prevention and relief operations

Provision of epidemic prevention materials, material cards, and learning technology like laptop computers to students from low-income families.



Donation of anti-epidemic materials to front-line anti-epidemic staff



Home Care Project

Amid these challenges, New Taipei City launched the "Home Care Project", which introduced a call center to assist home caregivers and individuals in close contact with COVID-19 patients who faced various challenges and emergencies during their home quarantine. The Zhonghe, Bali, and Xizhi District Offices of New Taipei City reached out to Tzu Chi, to mobilize volunteers who manned the call center in shifts, providing dedicated telephone support to caregivers and COVID-19-positive patients. As the epidemic escalated, with daily confirmed cases exceeding 10,000 in May, and over 30,000 individuals cared for at home, volunteers from the greater Taipei area extended their support, including providing writing materials and offering telephonic assistance.



Upon receiving reports from Mayor Mei-Gui Wang of Xiulin Township, Hualien County, that individuals undergoing home quarantine due to COVID-19 were in need of essential daily supplies, Tzu Chi volunteers swiftly organized the packing and delivery of 600 boxes of "Essentials Support Care Package" to Shuiyuan Village. This initiative aimed to ensure the well-being of the villagers during their quarantine period. Additionally, expressions of support in the form of necessities, protective supplies, and Jing Si herbal drinks were extended to the Beipu Police Station and Fire Department. This gesture not only contributed to the health and safety of the police and firefighters but also served as a token of gratitude for their unwavering dedication and hard work during the challenging times of the epidemic.



During the epidemic, 36 Tzu Chi Jing Si halls were turned into "vaccine administration stations" to provide the public with a comfortable and accessible environment for vaccinations. Recognizing the effectiveness of this initiative, the Taichung City Government sought to utilize the 6 parks located within the Tzu Chi Central District for vaccination efforts, starting in June 2022.



In late April, an outbreak of infections occurred within the Liming Nursing Institution in Hualien. Both the residents and staff members were subsequently diagnosed with COVID-19. Tzu Chi quickly delivered essential epidemic supplies to the institution, including rapid screening reagents, N95 masks, isolation gowns, food and necessities kits and Jing Si Herbal Drink. These supplies were accepted on behalf of the institution by Director Shu-Yi Qiu. Director Qiu expressed gratitude for the assistance received from various sectors since the onset of the pandemic. Whether in the form of epidemic supplies or various expressions of care, the support provided has been instrumental in aiding the Liming Nursing Institution. He thanked Tzu Chi for the timely assistance, which enabled them to navigate the pandemic and resume a semblance of normalcy.

2-1-2 Community Emergency Care

Emergency care provided for **177** incidents including fire, earthquakes, wind disasters, and car accidents

Companionship care offered to **6,062** individuals

6,120 volunteer mobilizations

Caring actions included psychosocial care, provision of hot food, distribution of condolence money, hospital care, distribution of blessing gifts, post-disaster cleaning, repairs, and reconstruction



0918 Earthquake Care

Home Visits & Emergency Fund Distribution **986** households / **1,643** people benefited

Home Repair & Reconstruction of **196** homes Repair of **4** schools

3,684 volunteer mobilizations

On September 18th, a powerful magnitude 6.8 earthquake struck Chi-Shang in Eastern Taiwan, resulting in severe damage to houses in Yu-Li and Chi-Shang, with some structures collapsing. In response to this, Tzu Chi initiated an emergency care operation. Volunteers were swiftly mobilized to aid in restoring campus environment and initiating the repair and reconstruction of damaged houses. This effort aimed to bring a sense of reassurance to the affected villagers, particularly as the New Year approached.





Care Actions

September 18: Immediate emergency assistance on the day of the earthquake, and Yuli Tzu Chi Hospital launched mass injury procedure

September 20: Assisted 2 schools in Hualien to clean up and recovery

September 25: Provided 475 care response home visits in Yuli, Hualien

September 27: Signed a Memorandum of Understanding with Hualien County Government on post-disaster reconstruction

September 28: Recruited professional repair volunteers nationwide

September 29: Volunteers conducted first renovation survey and repair project

October 2: Provided 324 care response home visits for 7 townships in Taitung

October 5: Signed a Memorandum of Understanding on post-disaster recovery and reconstruction with the Taitung County Government

October 6: Started school renovation; construction at Fuli Elementary School began

October 16: Undertook repairs for low and medium impacted households in Taitung

November 6: Completed first phase of the renovation project; held a prayer gathering for affected residents

December 12: Constructed steel structure relief houses for severely affected households

January 17, 2023: Handed over the first 6 steel structure safe houses

March 2023: Completed renovating the 7th steel structure house and 4 schools

Steel Structure House

Building materials: Steel skeleton, metal outer wall, calcium silicate board compartment, and bathroom equipment

Construction method: Prefabricated building materials assembled on-site using carpentry, water, and electricity construction

Features: Fireproof, shockproof, heat insulation, and moisture-proof for formal housing

2-2 International Disaster and Humanitarian Relief

2-2-1 Enhancing International and Collaborative Efforts to Assist Ukrainian Refugee

The Russia-Ukraine war in 2022 resulted in the displacement of over 5.4 million Ukrainian refugees from their homes, with an additional 7.7 million Ukrainians becoming internally displaced. In the midst of family separations, loss, hunger, and psychological trauma, refugees also require education and long-term recovery support.

Volunteers from **12** countries and **11** cooperative organizations
Assisted **1.78** million refugees across **9** countries

Emergency Phase: Practical and Immediate Assistance

Implementation Outcomes

Distribution Location: **10** cities in Poland, including Warsaw, Lublin, Opole, Poznan and Szczecin.

Materials Distributed: **38,994** shopping cards and cash value cards,

42,166 warm eco-blankets, sleeping bags, food, and other daily necessities.

Number of Beneficiaries: **364** sessions / **81,317** people

Volunteer Involvement

Tzu Chi volunteers from **12** countries, with **1,987** volunteer mobilizations

Cash for Work relief provided for **1,290** shifts

Expanding Assistance through International Humanitarian Organizations Collaboration

Collaborative Charities

11 local and international NGOs:

UNICEF, Camillian Disaster Service International (CADIS), Caritas, Red Cross, IsraAid, Adventist Development and Relief Agency (ADRA), Fundacja Polki Mogą Wszystko, Airlink Flight, World Hope International, Project HOPE, and Oratory of St. John Bosco



Aid Target

Ukrainian refugees in **9** countries

Ukraine, Poland, Czech Republic, Slovakia, Italy, Croatia, Bulgaria, Romania, and Moldova.

Aid projects

Assistance Projects Over **10**, including:

Refugee center psychosocial care / Distribution of essential materials and clothing
 Issuance of shopping and cash value cards / Health and medical care
 Support and referral for medical supplies and needs / Language learning and children's education
 Psychological and legal counseling / Medium and long-term economic subsidies
 Winter supply distribution

Implementation Outcomes

1,701,996 people benefited from these aid projects

The initial

distribution of aid for Ukrainian refugees occurred on March 5th on the outskirts of Poznan, Poland, at a location provided by the Skórczewo government. Subsequently, our focus of care extended to Poznan, Lublin, Szczecin, the capital Warsaw, and Opole, where local volunteers were situated, gradually encompassing nearby cities. Our approach to assistance evolved from primarily distributing essential living materials to taking into account the diverse needs of refugees and their potential migration situations. This transition involved replacing shopping cards for use at major local supermarket chains with cash value cards, enabling refugees to utilize them through various avenues during their journeys.



In Poznan

, cash value cards were distributed at the Rokietnica Fire Station's affiliated conference hall. Ukrainian volunteers, wearing distinctive vests, meticulously checked distribution information for villagers.



In Lublin

, collaboration with Caritas and Ukrainian work-relief volunteers facilitated numerous distributions, crossing religious, linguistic, and ethnic boundaries, and fostering stronger bonds of love.



In Opole

, Tzu Chi collaborated with entrepreneurs and the government, distributing cash-value cards at Opole Stegu Arena. Ukrainian individuals collected the cards individually at sub-stations.





Through home visits, it became evident that elderly Ukrainian migrants in **Poland** were facing language and employment difficulties, which were affecting their overall well-being. In response, a charitable initiative centered around Ukrainian dumplings was launched. This involved inviting the elderly to participate in a weekly activity of making Ukrainian dumplings, providing them with an opportunity to connect with others outside their homes and find enjoyment in the process.

Tzu Chi's short-term emergency aid for Ukrainian refugees reached a successful conclusion through the distribution of **cash-value** cards in several districts of Poland. Mid-term aid evaluations are now underway in different regions, which include providing Polish language classes to assist Ukrainians in acquiring fundamental listening, speaking, reading, and writing abilities. These efforts aim to facilitate seamless transitions into the job market and promote self-sufficient living.

Furthermore, we have collaborated with **Fundacja Polki Mogą Wszystko** to implement the "Safe Haven" collaboration program. The Safe Haven initiative provides a range of engaging activities for children while their parents take part in training sessions. Through these diverse activities, children learn to manage their emotions, develop a sense of safety, and effectively express and share their feelings. On this particular occasion, the featured activity was the "Creative Workshop - Parachute."

2-2-2 Overseas Epidemic Prevention and Emergency Aid

Anti-epidemic supplies delivered to the Solomon Islands.



3,074,017

overseas anti-epidemic supplies

Anti-epidemic materials: 18 countries / 3,073,597 pieces of masks, isolation gowns, home epidemic prevention kits, etc.
 Medical equipment: 4 countries / 450 pieces of respirators, oxygen tanks, ambulances, oxygen generators, etc.

Oxygen tanks delivered to Sri Lanka.



Tzu Chi cooperates with "Life for Love" to deliver medical and anti-epidemic supplies such as anti-expiratory apparatus to India.

2-2-3 Overseas Emergency Aid

392,929

beneficiaries

4,373

volunteer mobilizations

In 2022, Tzu Chi conducted disaster relief efforts and distributed emergency aid supplies in 11 countries. These countries include Pakistan, Bangladesh, the United States, Uganda, Malaysia, Madagascar, Mozambique, the Philippines, Sierra Leone, Mexico, and Ecuador. The situations addressed encompassed various disasters such as floods in Pakistan, Typhoon Rey in the Philippines and Malaysia, Cyclone Gombe in Mozambique, fires and floods in Sierra Leone, Hurricane Ian in the United States, Cyclone Batchile in Madagascar, September 19 earthquake in Mexico, Cyclone Xitang in Bangladesh, and a fire in Entebbe, Uganda.



Ongoing Cyclones in Madagascar, Food & Seed Distribution, and Relief Efforts

Since from late January, Madagascar has experienced the impact of four consecutive cyclones along with an enduring drought, leading to severe food shortages. Collaborating with the local Lions Club, Tzu Chi conducted a distribution of essential daily items, including rice, beans, sugar, and soap, to 1,460 households across four villages in Mananjary from April 9th to 12th.

In January 2023, famine relief was extended to the Ikongo district. Immediate nutritional aid, shovels, and vegetable seeds such as corn, white beans, soybeans, and tomatoes were provided to address the crisis.

Pakistan Floods: Collaborative Efforts to Assist Victims

In response to the floods in Pakistan, Tzu Chi extended its assistance once again in 2022, following previous relief efforts after the 2005 earthquake and the 2010 flood.

Heavy and continuous rainfall caused flooding that affected approximately one-third of Pakistan's territory from June to August. According to the Pakistan National Disaster Management Agency, this disaster resulted in approximately 17,000 fatalities, over 12,800 injuries, damage to more than 2 million homes, and the destruction of over 161 thousand hectares of crops. In response, the Pakistani government declared a state of emergency and sought international assistance.

Tzu Chi collaborated with local organizations in Pakistan, including the Care Foundation, Islamic Aid Association, Shakaja Women's Rights Organization, Medina Center for Islamic Studies, Catholic Spiritual Medicine Association, and World Federation of Physicians. In September and October, Tzu Chi conducted visits to the disaster-affected areas, documented the situation, and organized various distribution activities. Collaborating with the World Federation of Physicians, medical services were provided to address urgent needs, contributing to the stability of people's lives through this cross-organizational partnership.

A wide range of aid items were delivered, including food and living essentials, blankets, medications, hygiene kits, cold protection materials, mosquito nets, supplementary medications, free clinics, gynecological and pediatric diagnosis and treatment, as well as pediatric immunizations and other medical services.





Action 3 Addressing Declining Birthrate and Aging Care

3-1 Nurturing Youth to Shape the Future Together

"Education is the beacon of hope for children's futures and a stepping stone to lift disadvantaged families out of poverty." Tzu Chi's approach involves "Educational Empowerment to Foster Talents and Alleviate Poverty." Our "Diversified Youth Public Welfare Innovation" initiative facilitates learning, nurtures young talents, broadens international perspectives, showcases the creativity of youth, and cultivates practical skills and competitiveness of the next generation.

1,400,128 people benefited
105,050 volunteer mobilizations

Defying Tourette's Syndrome and Pursuing a Track and Field Journey

Despite his father's battle with cancer, his new immigrant mother juggling multiple jobs to support the family, and his own challenges with Tourette's syndrome, student Cheng, a sophomore at the Taichung Municipal Cingshuei Senior High School, maintains an unwavering determination to succeed. His Tourette's syndrome was once a condition that hindered his studies until he discovered shot put and softball throw. Engaging in these sports led to a reduction in the uncontrollable noises associated with Tourette's syndrome, and his performance improved significantly, eventually culminating in his achievement of a nationwide championship.

Recognizing his achievements, Tzu Chi volunteers who had been with him on his journey were overjoyed. They gifted him with a laptop to aid in his studies.

Student Cheng shared, "I was diagnosed with Tourette's syndrome when I was in fourth grade of elementary school. It made me involuntarily make noises during class. After about a year of practicing sports, my condition improved, and I stopped making as many noises."

Time and again, he practiced the fundamental steps: walking, pausing, thinking, and adjusting.

Sports not only improved his symptoms but also guided him towards caring for his family. He aspires to become a national-level athlete, hoping to secure financial prizes that will assist his mother.

Supporting Rural and Village Education

7 institutions, **56** schools

Educational resources: Nutritious breakfast, psychotherapy, supplementary classes
School athletic program support: track-and-field, soft tennis, baseball, volleyball, soccer, weightlifting, basketball, archery team, etc.



Population aging and declining birth rates represent two ends of a seesaw.

The phenomenon of a “declining birth rate” has led to an imbalanced population structure. The elderly has grown significantly, necessitating increased medical care, pensions, and other benefits, which in turn puts pressure on the younger generation. In response to the changing demographic landscape, Tzu Chi has expanded its effort to care for both the young and the elderly, transitioning from preventive charity work to on-demand care. This shift aims to create more opportunities for young individuals while enabling the elderly to age healthily, comfortably, and happily.



Empowering New Generation of Students: Witnessing the Power of Education and Care

Student Chen was diagnosed with Attention Deficit/Hyperactivity Disorder (ADHD) as a child. Despite being recommended for special education, he insisted on attending regular classes. He excelled in subjects like music, chemistry, and mathematics, built positive relationships with his peers, and received awards. His achievements were recognized by the school, earning him the Presidential Education Award.

Living with his mother, grandfather, and uncles, Student Chen's family of 10 led a peaceful life. However, his eldest uncle had fallen into a vegetative state years ago due to a brain tumor rupture. To support the family, Student Chen's mother sometimes had to work two jobs.

During his time at Kinhu Junior High School, Student Chen developed a passion for traditional Chinese music, but the tuition fees posed a challenge. His exposure to traditional Chinese music positively impacted various aspects of his life. Recognizing his situation, the schoolteacher informed Tzu Chi. Through the Safe Learning Program, Tzu Chi subsidized the tuition for traditional Chinese music classes, helping Student Chen nurture his musical talent.

Student Chen's ambition is to become a pharmacist and assist others in using medications responsibly. Faced with numerous obstacles in his education and life journey, he overcame them with determination. He expressed heartfelt gratitude to everyone who supported him along the way.

Navigators: A Different Kind of Work Team

This team stands apart from the rest.

Made up of families under Tzu Chi's long-term care, they have turned their personal experiences and empathetic hearts into a source of companionship. They believe that they can do Tzu Chi in a more creative way to extend help to others in diverse ways.

Tzu Chi Foundation invited college students from care families in the eastern region to serve as Tzu Chi's work-study navigators during the winter and summer vacations. The navigators make records, photographs, and video clips in the camp and further arrange to participate in Tzu Chi's social innovation activities according to their expertise and interests. We aim to provide opportunities for college-aged teens to participate in community welfare services, plant seeds of kindness in everyone's hearts, and provide water to nourish its development!



#Leave No Child Behind: Bridging Gaps Worldwide

The #Leave No Child Behind (Online Tutoring) program has entered its 5th phase. A father of a student who participated in the 5th phase shared his experience of facing financial difficulties at home, which prevented him from affording after-school courses for his children. In the "#Leave No Child Behind" project, older students are paired with younger ones to provide online tutoring and support. This initiative has transformed students' typical reluctance to ask questions to teachers in class, fostering a more active learning approach that fuels growth. The Principal of Si-Shih Elementary School observed significant improvements in both academic performance and character among students engaged in the "#Leave No Child Behind" project. University volunteers, too, have enthusiastically contributed to the project, showcasing their passion for teaching and anticipating that the experience will greatly benefit their future careers.





This initiative has extended internationally, with the recruitment from more than 10 countries of young tutors to teach underserved students in regions such as northern Thailand, Mozambique, the Dominican Republic, and other countries using the Online-Merge-Offline approach. Teachers prepare lesson plans, and tutors guide students in online English learning sessions, aiming to provide high-quality SDG4 education.

Implementation Results for #Leave No Child Behind



38,073 of university companions

80,705 of elementary school companions

	Interval	Period	 No. of university tutors	 No. of elementary school participants	 No. of beneficiaries	 Service hours
Disadvantaged students in Taiwan	2022—2023	5	263	438	9,947	77,155
	2022	4	173	368	4,260	2,997
	2022	3	280	481	8,770	9,549
	2021—2022	2	545	441	10,640	16,779
	2021	1	728	2,126	38,192	38,640
Northern Thailand English Learning Program	2022—2023	5	6	28	196	42
	2022	4	24	66	396	216
	2022	3	7	16	128	84
Taiwan Rural Group Counseling	2022—2023	5	54	92	4,648	4,876
	2022	3	27	63	3,528	3,024



Furthermore, Tzu Chi and National Taiwan Normal University have joined forces in the "El Menahil Promise – Project Mandarin" . This initiative offers Mandarin language learning for Syrian refugee students at El Menahil School, encompassing both online interactions and in-person communication. The online tutors will visit Türkiye during the summer vacation of 2023 and the winter vacation of 2024 to provide in-class assistance to Syrian refugee schoolchildren.

Global Transformation Begins with a Single Thought and Action!

LifeMaker Junior College Youth Camp

The "LifeMaker Junior College Youth Camp" has designed to include four core learning themes: self-exploration, life design, social engagement, and global citizenship. Through immersive camps led by experts from various fields, the aim is to guide students in collaborative experiences and projects, fostering insights and self-inspiration. By doing so, they can discover their life paths, embrace innovative thinking, and shape impactful lives, ultimately becoming unique LifeMakers!



Promoting Public Awareness of Disaster Prevention in Daily Life

In recent years, the National Fire Agency, Ministry of the Interior, through training numerous disaster prevention volunteers, has become the catalyst for community disaster prevention and relief efforts, contributing to the advancement of disaster preparedness initiatives. Tzu Chi Foundation has been actively collaborating in this initiative. On August 18th and 19th, in collaboration with New Taipei City Zhonghe High School, we organized Taiwan's inaugural "High School Youth Training for Disaster Preparedness." The aim is to foster a deep-rooted sense of disaster preparedness, motivating the younger generation to collectively care about local community disaster readiness and safety. The disaster preparedness training program includes subject knowledge and CPR first aid skills.



Youth Empowerment: Innovation, Creativity, and Entrepreneurship

The Tzu Chi Vision Future Incubator Initiative has reached a significant milestone, entering its fifth year of operation. During this period, the project has made a profound impact:

It has nurtured and supported 55 dynamic teams, consisting of over 115,700 young individuals, who have been actively engaged in various social enterprises.

Moreover, the initiative has organized and conducted more than 750 training courses, enhancing the skills and knowledge of its participants.

Notably, six of the project's teams have evolved into formal organizations, demonstrating the long-term sustainability and effectiveness of this endeavor.

On December 10, a remarkable event took place- the 5th Vision Future Awards Ceremony and the announcement of the 6th nominees. The event, held at Huashan Cultural and Creative Park in Taipei City, provided a platform for young minds to showcase their innovative accomplishments and ideas. The presence of CEO Po-Wen Yen and Deputy CEO Scott Liu highlighted the significance of these young leaders and their contributions.

The theme for the year 2022, "Youth Innovation to Inspiration" not only encouraged local Taiwanese youths but also attracted the participation of international youth from Malaysia, Singapore, Indonesia, Japan, and South Korea during the 5th year. The project's global reach expanded further in its 6th year, with the inclusion of participants from countries such as Australia, New Zealand, Vietnam, Thailand, the Philippines, and Brunei.

Over the course of a year, with support from Tzu Chi, participants benefited from a multifaceted array of resources, including startup grants, professional mentoring, specialized training courses, and strong community networks. This comprehensive guidance has led to the formation of 11 new teams. These teams are at the forefront of empowering young individuals by raising awareness of sustainability trends, addressing social concerns, and inspiring youth to engage in public welfare initiatives, contribute to continuous improvement and development of social welfare.

55+ Vision Future teams

6+ formal organizations

115,700+ youth involvement

750+ training courses



Green Technology Camp: Expanding Students' Horizon

Tzu Chi, in collaboration with the Industrial Technology Research Institute and the Hsinchu City Government, organized the "Green Technology Camp for Underprivileged Youth". The primary objective of this initiative is to welcome underprivileged and new migrant children to explore specialized facilities such as "smart medical centers" to instill the idea of achieving net-zero sustainability and educate them on the concept of utilizing technology for the betterment of society through technology research and development and humanitarian care.



Fostering International Youth Leaders: Youth Delegates Engaging in International Conferences

In 2022, the Tzu Chi International Youth Association (TIYA) launched its inaugural International Youth Leadership Program (IYLP) with 10 outstanding young people from six countries selected. These young leaders were nurtured through a comprehensive process encompassing induction, mentoring, cultivation, and empowerment, with the aim of representing Tzu Chi at prominent international events such as United Nations Climate Change Conference COP27 and New York Climate Week.

Building on this success, the second training program was launched in December, targeting individuals aged 20 to 35. A total of twelve people were selected for an intensive six-month education and training program. Upon the completion of the program, will provide substantial support to engage in United Nations conferences (COP28, UNEA-6) and international humanitarian relief initiatives.





30 Years of Tzu Chi Collegiate: The Power of Youth

The Tzu Chi Collegiate Association (Tzu Chi Collegiate) was founded in 1992 and celebrated its 30th anniversary in 2022.

Over these three decades, generations of Tzu Chi Collegiate volunteers have dedicated themselves to various forms of service, including institutional care, environmental

protection, free clinics, tutoring, and charitable activities. The mission of Tzu Chi Collegiate has remained unwavering: to uphold the spirit of compassion, continually spreading the power of love.

At the 30th anniversary year of Tzu Chi Collegiate, Tzu Chi youth committed to the spirit of volunteering. This initiative utilizes technology to promote vegetarianism, engage in sports events, and foster book clubs, all with the goal of inspiring more young people to join Tzu Chi and collectively work towards a sustainable future.



Tzu Chi International Youth Association (TIYA) Conference 2022

The inaugural TIYA event carried the theme “Youth Action: Reimagining Our Future Together.” Its primary objective was to collaborate with the emerging sustainable lifestyle brands, namely Plantarium and 5% DesignAction. Together, they organized workshops and discussions centered around three pivotal themes: Recycling, sustainable education and low-carbon plant-based diets.

The overarching aim was to introduce innovative solutions aligned with sustainable Earth initiatives and envision a brighter future. TIYA, in partnership with these associations and social enterprises, sought to collectively craft a green blueprint for sustainable development.



3-2 An-Mei Project Elderly Care Initiative

In the face of Taiwan's super-aging society in 2025, Tzu Chi is committed to delivering comprehensive care for the elderly, covering every aspect of their lives. We aim to create a "stable home, a beautiful community," that fosters a caring environment for the elderly, and a peaceful and loving society.

1,554,132 beneficiaries
9,202,702 volunteer mobilizations

Actions for Elderly Care



Visiting care

We offer financial subsidies, material assistance, home visits, and telephone check-ins to ensure the well-being of the elderly.



Environmental Improvements

We enhance home safety for the elderly and individuals with disabilities, and provide accessibility aids and services to make their living spaces more secure.



Healthcare Support

Our services include providing nutritional supplements, delivering community love meals, offering community-based care, medication consultations, physical fitness programs, digital healthcare solutions, all tailored to the specific needs of the elderly.



Long-Term Healthcare

We provide home care and home nursing services, operate daycare centers, long-term level C centers, promote community-based care, and focus on enhancing the overall health of elderly individuals in the community.



Solidary Elderly Project

We collaborate with the Taipei City, Kaohsiung City, and Tainan City Governments to implement specialized care projects for solidary elderly individuals.



Healthcare Stations

Tzu Chi has established an online blood pressure measurement system at its environmental protection stations. We offer courses on maintaining a balanced diet and regular exercise, and empower our volunteers to support the elderly in managing health, diet, and nutrition.

An-Mei Project

Providing a safe, stable community for young and old alike

Stable Home | Beautiful Community | Healthy Aging



Digital Health Care: An-Mei Initiative 2.0

On November 11, an official charitable agreement was signed between Tzu Chi Foundation and Foxconn Technology Group at the Jing Si Hall in Xindian. Foxconn Technology Group will provide a health monitoring system, collaborating with Tzu Chi's medical volunteer team to create a technologically advanced charitable care initiative.



Enhancing Home Safety: Practicing Preventive Medicine

Improving home safety for underprivileged families has been a cornerstone of Tzu Chi's charitable endeavors for over half a century. In light of the growing elderly population, the significance of "home safety" has never been more pronounced.

For the elderly and individuals with disabilities, this holds paramount "preventative" value. From comprehensive household repairs to simple anti-slip measures on the floors, these initiatives constitute the most fundamental safeguards for life security.

Home safety improvement
completed

1,026 households

Aging Communities in Need

In Tainan City's Dongshan District, there is a significant exodus of young residents, leaving the elderly population over the age of 65 to comprise approximately 25% of the district's total inhabitants.

To address the challenge of limited bathroom and toilet space, our dedicated volunteers have chosen to install flip-up folding handrails for the elderly, like the grandma in the photo, in order to prevent accidents. These handrails not only occupy minimal space but also ensure Grandma's mobility remains unhindered.



Transforming lives through house safety renovations

Uncle Lee, a resident of Chiayi, lives a solitary life. He grapples with polio, blindness in one eye, and an amblyopic left eye while residing in an old, rundown house

There was no gas for cooking, and he has never taken a hot bath.

Volunteers learned of his plight, stepped in to provide long-term care and transform his living conditions. They renovated his entire house, from repairing the roof to replacing wires and switches. Tzu Chi volunteers also installed essential amenities such as water heaters, safety handrails, lighting equipment, wardrobes, tables, chairs, bed boards, and mattresses. Uncle Lee shared, "They cared for me like family, it feels very warm, and they gave me a different life!"



Reuse Environmental Protection Accessories, Companionship During Recovery

When an elderly individual experiences a fall while bathing and requires emergency hospital treatment, the hospital consistently advises family members to ensure they have the necessary assistive devices ready before the patient returns home. This period of rehabilitation and the family support system around the individual has emerged as a crucial concern in our aging society.

In 2017, Tzu Chi initiated the Assistive Devices and Mobility Aid Recycling Platform with the dual aim of promoting environmental sustainability and aiding disadvantaged families. Our volunteers employ a comprehensive "one-stop" care service approach, which involves inspecting assistive devices before delivery, offering assistance with home assembly, and conducting follow-up home visits. This holistic approach not only benefits the less fortunate but also bolsters Taiwan's long-term healthcare system. Together, we are dedicated to nurturing an aging society while simultaneously championing environmental conservation and carbon reduction.

In 2022, Taiwan inaugurated **26** assistive devices and mobility aid care networks to **22** counties and cities

disbursing a total of **18,980** assistive devices Over the past five years, Tzu Chi have provided **51,451** assistive devices to those in need



Mr. Lee, who lost his right leg in a vehicle accident at the age of 18, eagerly tried out the electric scooter generously donated by volunteers. He quickly adapted to it, and was able to fulfill one of his most cherished desires, which was to reunite with old friends.

The Alishan Township Office in Chiayi County informed Tzu Chi about the urgent need for assistive devices in 12 villages. Within just three days, our dedicated volunteers delivered over 120 assistive devices to 96 households. The recipients wore bright smiles, relieved by the devices that alleviated their caregiving stress.



Action 4

Ecological Conservation and Environmental Education



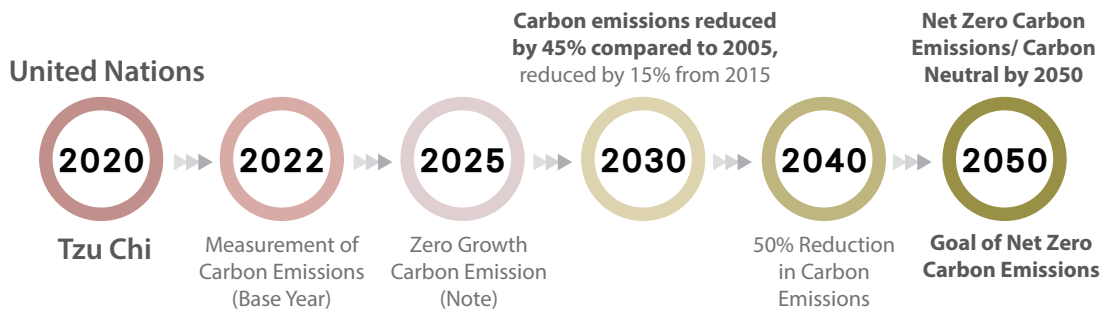
4-1 From Advocacy to Actions—— Net Zero Carbon Emission Initiatives

Confronting the 21st Century Challenge of Achieving Net-Zero Emissions

Transitioning from Environmental Protection and Recycling to a Circular Economy, Zero Waste, and Net-Zero Emissions Tzu Chi Sets Ambitious "2050 Net Zero Emissions" Goal

Embarking on its journey towards mitigating greenhouse gas emissions, Tzu Chi has unveiled its "net-zero emissions" target, leveraging Science-Based Targets (SBT) to establish carbon reduction objectives. The outlined goals entail halting the growth of carbon emissions by 2025, achieving a 50% reduction in carbon emissions by 2040, and ultimately attaining net-zero emissions by 2050.

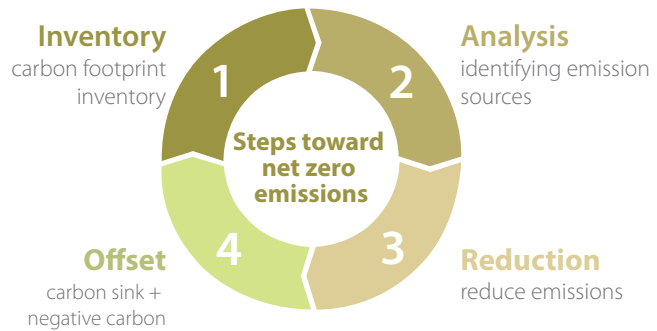
Tzu Chi's Key Net Zero Milestones



Note: Adjusted after calculation based on the Science-Based Carbon Target (SBT)

According to the United Nations IPCC report, approximately 3.3 to 3.6 billion people currently reside in environments at risk due to climate-related factors. Environmental challenges, including food insecurity, water scarcity, air pollution, and inadequate waste management, persistently jeopardize the well-being of individuals. Climate change poses a severe threat to the survival of our planet and the human race, resulting in growing concerns and fears about the future, which in turn lead to climate anxiety.

Under the motto "Coexist with Earth," it is essential to recognize that among those most profoundly affected by climate change, children and adolescents represent the most vulnerable demographic, and will continue to feel its impact for the longest time. Tzu Chi has consistently demonstrated a steadfast commitment to charitable initiatives aimed at mitigating climate change and strives to inspire more individuals to become trailblazers in the actions of environmental protection.



In 2021, Tzu Chi conducted an annual greenhouse gas emission inventory for the Hualien Jing Si Hall. This comprehensive assessment encompassed all personnel working in the offices of Jing Si Hall and Jing Si Abode, as well as the volunteer team based at Jing Si Hall in Hualien. The inventory included an evaluation of fixed combustion sources like gas stoves, mobile combustion sources such as official vehicles, and per capita emissions. In addition, emission sources within each room were examined, opportunities for improvement were identified, which allowed Tzu Chi to successfully obtain the ISO 14064-1 greenhouse gas verification certificate.



4-2 Tzu Chi's Environmental Protection — Creating Social Impact

Global Environmental Protection Promotion in **21** countries and regions

8,656 Environmental Protection Stations/Community Environmental Protection Sites

104,314 Environmental Protection Volunteers: taking action to protect the earth

Taiwan Tzu Chi Environmental Volunteers **91,526**

7,164 Environmental Protection Stations/Community Environmental Protection Sites

The overall SROI value for Tzu Chi's environmental protection is **6.3**

When accounting for volunteer input, the SROI increases significantly to **152.7**

Tzu Chi has invested in community resource recycling and environmental education through its environmental protection stations, which have brought about positive environmental and social benefits. The results of the social return on investment (SROI) analysis methodologically indicate that environmental volunteers play a crucial role in recycling resources within the community. They also interact with neighbors, leading to enhanced individual and group identity, improved interpersonal relationships, better physical and mental health, and the establishment of friendly and harmonious connections between humans and the environment, humans and nature, and among people themselves.

Tzu Chi established its environmental protection stations back in the 1990s when recycling and rubbish sorting were not widespread. Tzu Chi environmental protection stations, primarily managed by community members and offered as a free service, serve as collection points for recyclable resources and materials. They are open to the public, providing opportunities to learn about Tzu Chi, environmental protection, and take action to safeguard the environment. While practical recycling remains a key focus, Tzu Chi recognizes that educating individuals, especially from a young age, is essential to instill a strong environmental protection ethos. Thus, these environmental protection stations have gradually evolved into bases for environmental education within communities, empowering residents to sort recyclable materials and implement environmental protection initiatives. Simultaneously, this community approach fosters a sense of belonging and camaraderie among volunteers, nurturing stronger family bonds, challenging stereotypes about the elderly, and generating a myriad of social benefits.

Lovely grandma's environmental protection daily life

A-Zhui Yang Lee, a 93-year-old from Kaohsiung affectionately known as "Grandma Guzhui," has been actively involved in environmental protection for two decades. Despite her inability to walk, she and her son work together daily to sort recyclables, an activity that brings them much joy and exemplifies the daily life of Tzu Chi environmental protection volunteers.



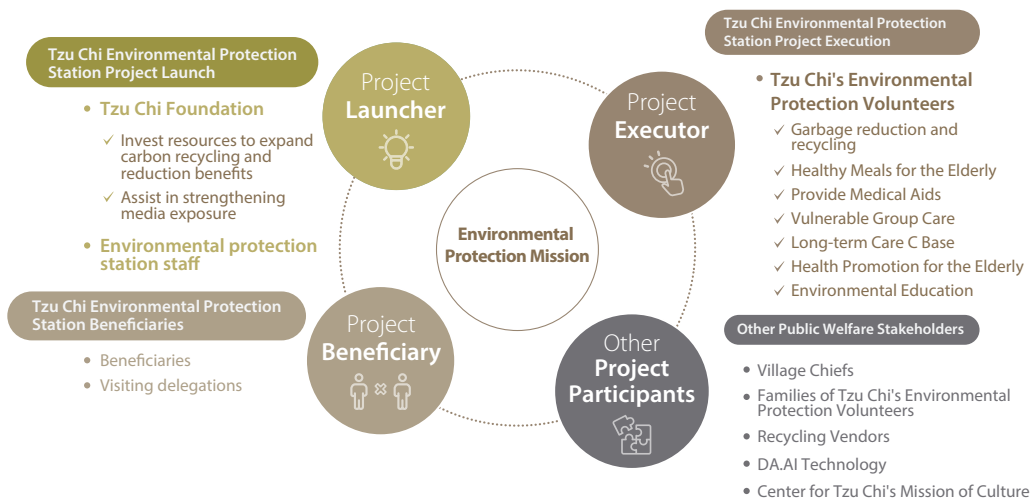
Statistics from 2020 reveal that approximately 56% of Tzu Chi's environmental protection volunteers are seniors aged 65 and older. To enhance the safety and inclusivity of environmental protection stations, Tzu Chi has transformed these stations into spaces that combine health assessments, health promotion, and social engagement opportunities for the elderly. The stations have evolved to be more than mere centers for community environmental education.

In 2021, we introduced courses on "Balanced Diet" and "Regular Exercise" to promote the physical and mental well-being of volunteers, covering aspects from body management to dietary nutrition. In 2022, data from 110,897 blood pressure tests were collected and uploaded at 88 environmental protection stations, further enhancing the stations' multifunctionality as community service facilities. We also encouraged older adults to partake in community services and activities, promoting better health and reducing healthcare costs and burdens.

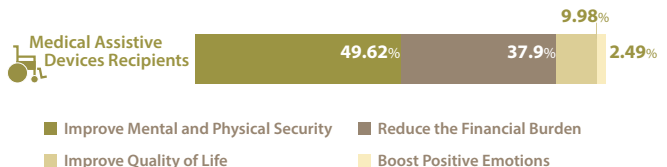
Through a systematic and scientific evaluation using the "Social Return on Investment" (SROI) method, we assessed the social impact of Tzu Chi's environmental protection mission and project benefits. Factoring in the time cost of volunteers (estimated based on the annual minimum hourly wage), the overall SROI value for Tzu Chi's environmental protection activities in Taiwan is 6.3. This means that every NT\$1.0 invested in Tzu Chi's environmental protection activities generates NT\$6.3 in social impact. When we calculate the contribution of the volunteers which is free of charge, the benefits can reach as high as NT\$152.7.

Stakeholders Assessment: Social Welfare

Environmental protection activities related stakeholders



Furthermore, SROI demonstrates that each dollar invested in the assistive devices and mobility aid platform can yield benefits equivalent to 81.18 times the investment. Medical assistive devices significantly "improve psychological and physical security" for 49.62% of recipients, while 37.9% "actually reduced their financial burden." These efforts bring substantial physical and emotional support to the recipients.



By quantifying project outcomes into measurable figures, Tzu Chi's environmental protection SROI accreditation was officially recognized by Social Value UK, an external accreditation body based in the United Kingdom, in April 2023. This accreditation underscores Tzu Chi's enduring commitment to community development and provides a shared foundation for communication with society at large.

4-3 Environmental Education and Advocacy

"PaGamO" eSports Platform: Learning Environmental Protection through Gaming

Taiwan team **20** counties or cities/ **1,457** schools
4,401 classes/ **97,823** people

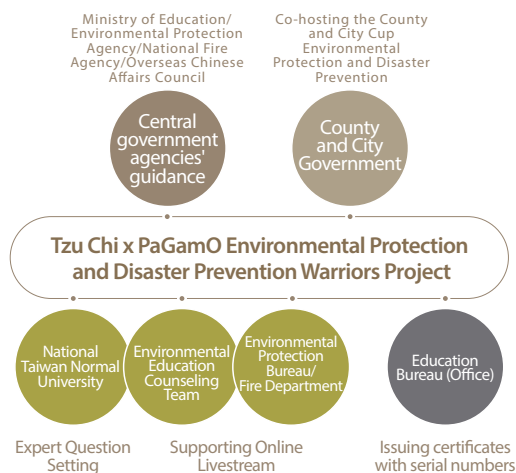
International Cup **11,113** people
 from the United States, Canada,
 Singapore, Malaysia, and Indonesia

In 2021, when Taiwan upgraded its COVID-19 alert and shifted to online education, Tzu Chi recognized the importance of continuous learning, even in the absence of physical classrooms, especially in the field of environmental education. For the first time, Tzu Chi collaborated with BoniO Inc. and utilized the company's "PaGamO" online platform, under the supervision of the Ministry of Education, national Fire Agency, and the Environmental Protection Administration of the Executive Yuan. This initiative, known as the "Environmental Disaster Prevention Champions Program" for children and teenagers, leveraged the e-sports learning platform, and spreading knowledge about environmental protection and disaster prevention.

After the Inter-School Cup and the County-City Cup took place in Taiwan in August 2021, the County Cup, Taiwan Cup, International Cup, and Tzu Chi Cup finals converged at the Xindian Jing Si Hall on March 27, 2022. The International Cup saw the participation of 145 players from the United States, Canada, Singapore, Malaysia, and Indonesia, all competing online.

Through this international collaboration, Tzu Chi established an industry-government-academia platform, known as the "PaGamO" environmental protection e-sports game. This platform boasts a question bank comprising over 700 questions, covering a wide range of topics such as epidemic prevention, water conservation, marine pollution, climate change, disaster prevention and relief, circular economy, energy conservation, carbon reduction, air pollution, resource recycling, and food environmental protection. Participants can acquire valuable insights into environmental protection and disaster preparedness concepts and procedures through this competitive gaming format.

On August 30, 2022, the second Tzu Chi "PaGamO" Environmental Protection and Disaster Prevention Champions Tournament took place in a school setting. The theme was to "connect education with technology and learn through gaming." The objective was to utilize the immersive experience of "e-sports gaming" to teach essential lessons on water and electricity conservation, disaster preparedness, sustainable living, and fostering a love for the Earth, all while overcoming the constraints of time and space.



Mobile Environmental Protection Education Van: Learning through Hands-On Experiences

START



<p>1 Exploring the Concept of Carbon Footprint Uncovering the Truth about "Carbon"</p>	<p>2 Introduction to KoKo, an animal affected by the impacts of human activities Embracing the Era of Climate Emergency</p>	<p>3 Investigating the Carbon Footprint of Clothing Impact of Fast Fashion on Climate Change</p>	<p>4 Learning How to Conserve Water Nine Frogs Emerging in Sun Moon Lake</p>
<p>2020-2022 13 counties and cities in Taiwan 51 exhibitions 81,822 learning participants</p>			
<p>8 Uncovering the Carbon Footprint of Transportation How to Reduce Greenhouse Gas Emissions</p>	<p>7 Embracing a Low Carbon Diet and Showing Love for the Earth A Visit to the High-Carbon Breakfast Car</p>	<p>5 Daily actions for Environmental Conservation Grooving with the Dancing Machine</p>	<p>6 Gaining Insights on Reducing Greenhouse Gas Emissions Meeting the "Happy Cow"</p>

Life Transformation Strategies: Embarking on a Journey towards a Vegetarian and Carbon-Reducing Lifestyle

Plantarium: Your Express Lane to a Plant-Based Diet

"Plantarium" is a fresh and innovative vegetable food brand that is funded by Tzu Chi Foundation. It is not just a place to savor plant-based cuisine but also a solution to combat climate change, under the philosophy of cross-sectorial partnership "DO GOOD TOGETHER." Within the "Plantarium" ecosystem, you'll find a variety of offerings, including restaurants, bakeries, baking classrooms, and other spaces. The supermarket features dedicated sections for unpackaged sales, curation, and workshops, while the Jing Si Bookstore has undergone a significant upgrade to version 2.0. The ultimate aim is to inspire and motivate more individuals to embrace a plant-based lifestyle and adopt environmentally conscious practices.



A Vegan-Friendly Shopping Environment

Unpackaged Food Buying and Selling

Interactive Cooking Classes

Engaging Baking Workshops

An Enhanced Jing Si Bookstore Experience

Spaces Dedicated to Curatorial Activities

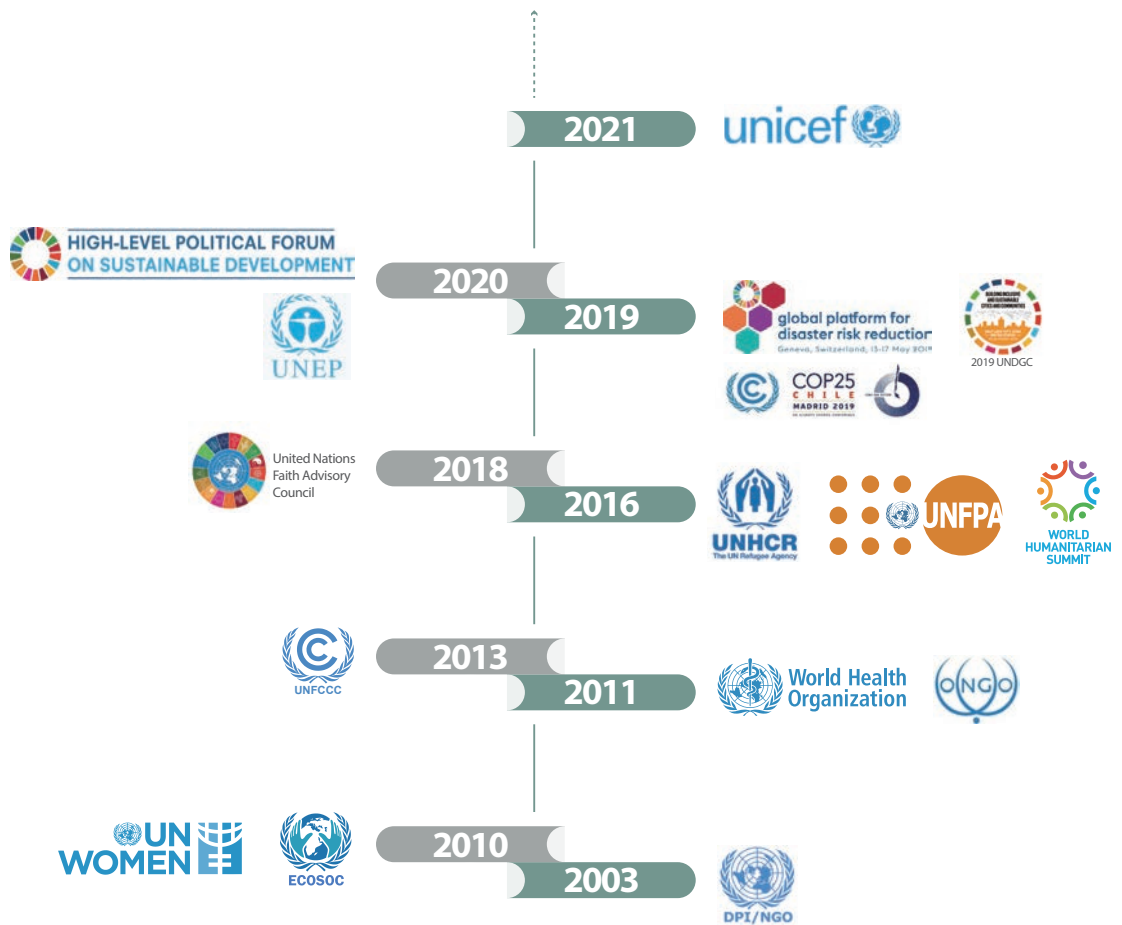


Action 5 Global Partners and Sustainable Development

5-1 Cooperation for Common Good and Sustainable Future

“I came to meet the revered Master with a joyful and thankful heart.” Fr. Baby Ellickal Kurian said that, during the two years of COVID-19, the Spiritual Medical Association and Tzu Chi worked together to uphold the humanitarian spirit and help the suffering people in the most rapid, protected, and respectful manner.

16 United Nations Organization Platforms





On the morning of December 9, 2022, Fr. Baby Ellickal Kurian from the Indian Spiritual Medicine Association, Bro. Paul Kabore from Burkina Faso, Fr. Huang Haoran - the director and corporate chairman of the Camillians in Taiwan, CEO Father Heng-Li An, and President Han-Guang Ma of Saint Mary's Hospital Luodong were accompanied by the Social Responsibility and Fundraising Center of the hospital to visit Master Cheng Yen in Xindian Jing Si Hall to discuss together the common good accomplished across religions. They also discussed epidemic prevention, refugee support, and the love and care for each other.

26 International Humanitarian Organization Partners



United Nations International Children's Emergency Fund

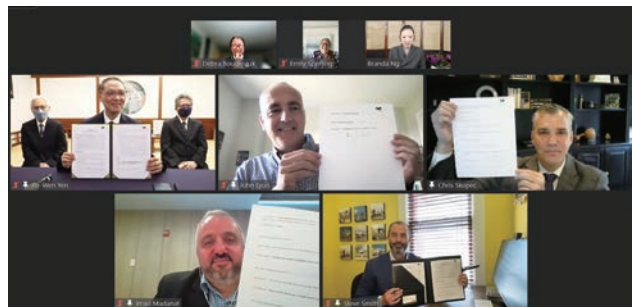
On April 22, the Buddhist Tzu Chi Foundation and the (UNICEF) provided urgently needed protection and services to children and their families affected by the Russian-Ukrainian war. They signed a memorandum of cooperation via video conference. The memorandum was signed by CEO Po-Wen Yan of the Tzu Chi Charity Foundation and Executive Director Michael Nyenhuis of the UNICEF USA Office to provide urgently needed humanitarian care to children and their families under the flames of war.



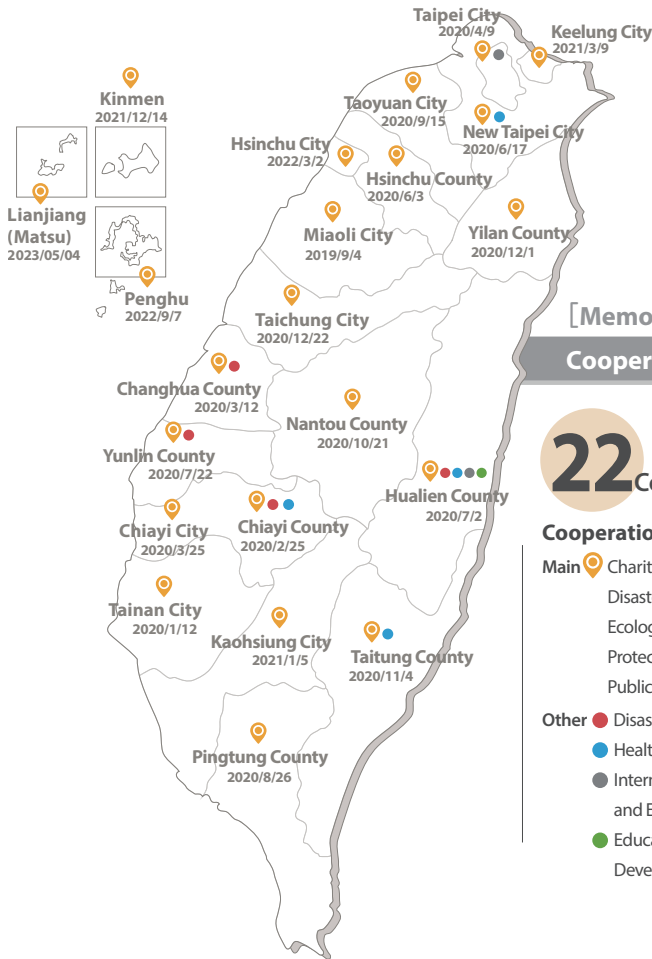
To expand assistance to Ukrainian refugees, the Association signed a Memorandum of Cooperation (MOU) with the **Camillian Disaster Service International** (CADIS) of the Catholic Spiritual Medicine Association on April 30 to jointly provide humanitarian assistance such as food and necessities, cash value cards, medical services, resettlement shelters, and psychological and skills counseling to refugees in Poland and Ukraine.



Tzu Chi has continued cooperating with international charitable and inter-religious organizations as the war between Russia and Ukraine entered its 100th day. Tzu Chi also signed a memorandum of understanding online with the **Airlink Disaster Relief Foundation** (Airlink), the **Adventist Development and Relief Agency** (ADRA), the **World Health Foundation** (Project Hope), and the **World Hope International**, on June 2 to transport the desperately needed medicines, medical equipment, and other necessities to Ukrainian refugees.



Tzu Chi has signed a memorandum of cooperation with **22** counties and cities in Taiwan and **16** professional organizations. The goal is to realize the power of the community through Tzu Chi volunteers, protect the public, care for the disadvantaged, and build a strong social safety net. We also strive to engage in interdisciplinary cooperation to exert the creative spirit of technology application.



[Memorandum of Cooperation and Common Welfare]

Cooperation Projects and Statistics

Statistics updated as of May 4, 2023

22 Counties/Cities

16 Professionalism Agencies

Cooperation Projects

- Main**
 - Charity Care
 - Disaster Prevention Education
 - Ecological & Environmental Protection
 - Public Welfare Humanities
- Other**
 - Disaster Relief Cooperation
 - Health and Long-Term Care
 - International Cooperation and Exchange
 - Education Support and Development

Signing Time/Institutional Unit

- 2019/04/16 National Science and Technology Center for Disaster Reduction (NCDR)
- 2019/04/30 College of City Management, University of Taipei
- 2019/07/12 Central Weather Bureau, Ministry of Transportation and Communications
- 2019/09/16 National Center for Research on Earthquake Engineering
- 2019/12/05 National Science and Technology Museum
- 2020/03/11 National Taipei University of Technology
- 2020/03/18 Environmental Protection Administration, Executive Yuan
- 2020/04/17 Water Resources Agency, Ministry of Economic Affairs
- 2020/05/26 National Applied Research Laboratories
- 2020/12/22 Soil and Water Conservation Bureau, Council of Agriculture
- 2021/01/19 Coast Guard Administration
- 2021/03/10 Water Co., Ltd. Corporation
- 2021/03/30 Overseas Community Affairs Council
- 2022/04/26 Industrial Technology Research Institute
- 2022/06/15 National Fire Agency
- 2022/11/18 National Police Agency

Use Technology for Public Welfare and Make Taiwan More Beautiful

The "Public Welfare Science and Technology Smart Service Platform" signing ceremony with the **Industrial Technology Research Institute** occurred on April 26. The purpose is to collaborate on product development and other scientific and technological fields in rural technology, emergency relief, recycling, green energy technology, net zero carbon emissions, smart care, and smart machinery.





Enhance the Energy for Disaster Prevention and Rescue Tzu Chi and Carrefour Sign a Memorandum of Cooperation

When a large-scale disaster occurs, Tzu Chi volunteers are always on the front line to support the people affected. Tzu Chi and **Carrefour**, a large-scale retailer, have decided to cooperate on charity. On June 22, the parties' representatives signed a memorandum of cooperation to

combine the power of Tzu Chi's comprehensive disaster relief network and Carrefour's complete warehousing and logistics system to enhance disaster prevention and maximize humanitarian rescue efficacy. We promptly collaborated during the 0918 earthquakes to bring daily supplies to the Taitung Xinwu tribe at the disaster site.

Director General Pao-Fang Chang of the **Volunteer Service Association of the Republic of China** (left), CEO Po-Wen Yan of Tzu Chi Charity Foundation, and Director General Chiung-Tao Shen of the **Taiwan Association of Social Work Education** signed a Memorandum of Understanding on "Social Work Education and Volunteer Empowerment" on June 25 to launch the first caregiver training program.



On September 18, an earthquake magnitude of 6.8 occurred in Chishang, Taitung, causing serious damage to residential buildings and campuses in Yuli, Fuli, Zhuoxi,

Taitung, and other areas in southern Hualien. Tzu Chi signed a memorandum of cooperation with the **Hualien County** and **Taitung County** governments on post-disaster reconstruction for the "0918 Earthquake" to collaborate on home reconstruction and education and assist victims in returning to normal life as soon as possible.

5-2 Tzu Chi Discourse International Accreditation

The 7th Tzu Chi Forum: Global Charity after COVID-19

Net Zero, Digital, and Generational Cooperation

The COVID-19 pandemic has caused global food shortages, deepened the gap between the rich and the poor, and made it difficult for humanitarian aid to come to fruition. Experts proposed post-epidemic global common good and transnational cooperation to achieve sustainable development. From “Net Zero Emission, Digital Society, to Generational Cooperation.” The 7th Tzu Chi Forum invited industry, government, academia, and non-governmental organizations to work together to find a solution for the epidemic era.

Shien-Quey Kao, the Vice Chairman of the National Development Commission, thanked Tzu Chi for inviting interdisciplinary talents to plan for Taiwan's sustainable development in the future. The occasion amply demonstrates Tzu Chi's concerns about alleviating pain and suffering with compassion and generosity. Chairman Stan Shih of the StanShih Foundation stated, “I keep emphasizing that altruism is the best form of self-interest. All decisions should be made with the common good and altruism in mind, allowing everyone to create or maintain a truly sustainable ecology.”

Kuo-Chun Luo, CEO of the Vision Project Foundation, said, “COVID-19 has restricted our movements, made many of our activities inconvenient, and decreased our income. We also discovered the problem of digital gaps. Many of our energy revolutions have begun to regress due to the Russia-Ukraine war.” Experts urged everyone to work together to overcome the COVID-19 and climate-change challenges. We must establish cross-border partnerships and take practical actions to achieve “economic growth, environmental protection, and social progress.” Sustainability is only achievable if disadvantaged people are given a greater chance to improve their lives.



United Nations Department of Global Communications High-level Forum

Tzu Chi Youth Representative NGO Speech



The United Nations General Assembly held a one-day "Moment for Nature" high-level forum. The United Nations Department of Global Communication recommended and invited Commissioner Ashley Yong of Tzu Chi's "Global Cooperation and Development Office" to represent the "Civil Society Youth Representatives Steering Committee" at the United Nations Headquarters in New York and give a speech in this high-level forum to explain the concerns and actions of youth groups on environmental protection issues to the representatives from various countries.



Yu-Hsiang Yang is a youth member representing 1,600 organizations certified by the United Nations Department of Global Communications. She was the only non-governmental organization representative at the conference that day. Under the theme of "What actions have young people taken in the environmental protection process," she urged the conference members to pay more attention to the environmental protection actions of the youth group against the "triple global crisis," consider the interesting and creative environmental protection projects for young people, and increase investment in the environmental protection actions by the next generation so that young people can participate more in the decision-making process. The ultimate goal is to help the new generation become core environment protection promoters and enable people of all ages to work together to solve the ecological and climate change crisis.

Vegetarian Food, Environmental Protection, Aiding the Weak and the Poor Tzu Chi's Experience Sharing at COP27

The 27th United Nations Climate Change Conference (COP27) was held in Sharm El-Sheikh, Egypt, from November 6 to 18. The conference's theme was "Together for Implementation, Common Practice." Nearly 200 world leaders participated in discussions on the global carbon market, energy crisis, climate damage compensation, and joint action to combat climate change.

Tzu Chi's United Nations team participated in the 13-day conference, including two paraphernal meetings, which were inter-religious press conferences. The topics included advocating plant-based diets and helping disadvantaged countries to develop agriculture.

Extreme drought and water scarcity cause working women in impoverished areas to spend more time looking for water. This increased burden has an indirect impact on children's educational possibilities. Tzu Chi reported that it had created agricultural opportunities for women, children, and disadvantaged groups in Mozambique, Zimbabwe, etc., to enhance their strength and help them grow.

Jing Si Abode's Master Te Yuan also shared, "We learned that all beings are equal to us. Indeed, on our land, we can get the nutrients we need for human beings from grains, nuts, and vegetables. They are easier to obtain and more environmentally friendly and humane than meat."

Julio Thompson, Bishop of the Anglican Church of Panama, stated, "When we are in an interreligious community, the most important thing is to respect each other's beliefs and traditions. In this way, we can build relationships and trust and gain the confidence to work together."

Living in harmony on earth requires love, interconnectedness, visibility, and empathy, which are ways for Tzu Chi to exert influence.



2022 Income and Expenditure Description

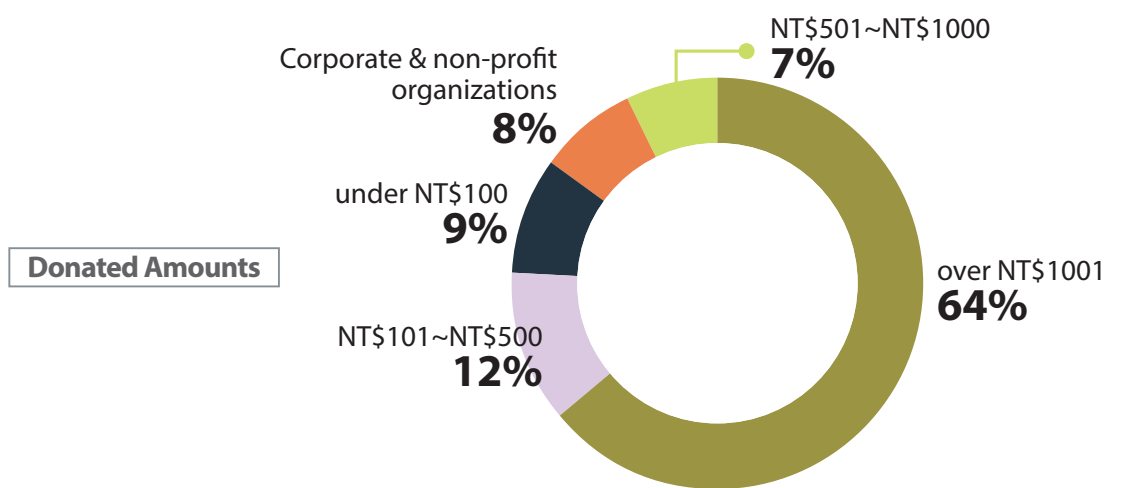
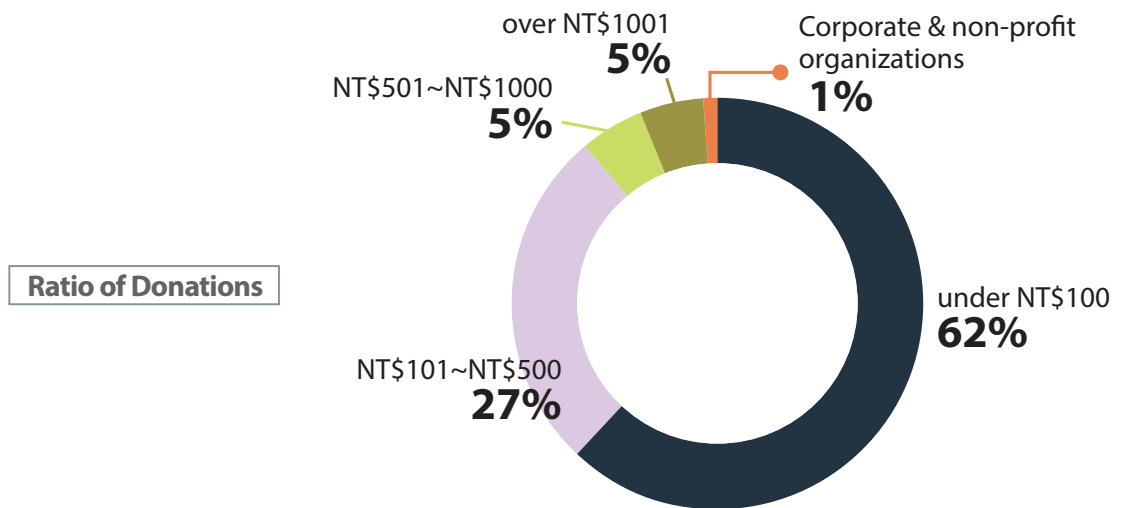
Donation Income Description

[Description for Donation Income and Expenditure in 2022]

The Foundation entrusted KPMG to review its financial statements for 2022. An audit was conducted, and a report containing "unqualified opinion" was released on Wednesday, May 17, 2023, as follows:

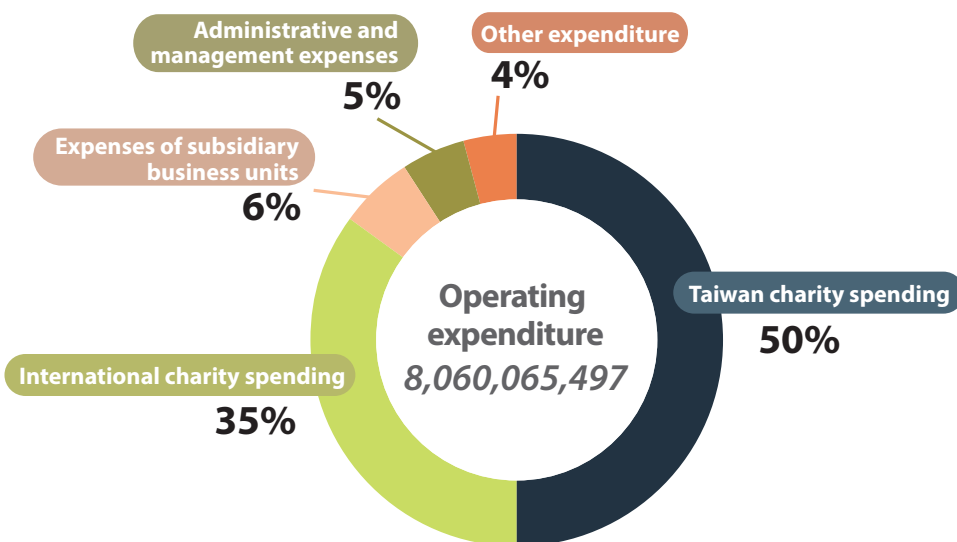
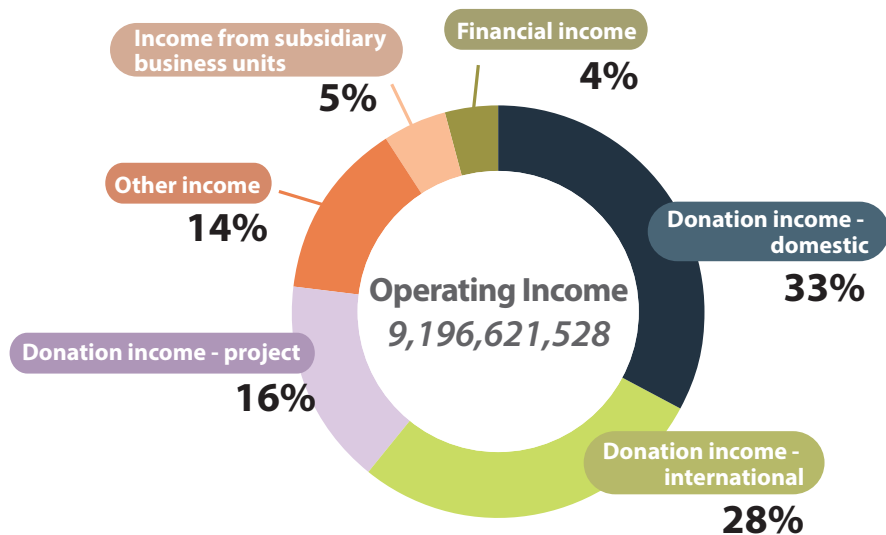
This CPA has completed the audit for the Buddhist Compassion Relief Tzu Chi Foundation's balance sheets for 2022 and as of December 31, 2021, as well as its Income Statement, Net Asset Value Change Statement, Cash Flow Statement, and Financial Statement Remarks (including a summary of major accounting policies) for 2022 and from January 1, 2021, to December 31, 2021.

In our opinion, the accompanying financial statements have fairly presented all material respects of the Foundation's financial position for 2022 and as of December 31, 2021, as well as its financial performance and its cash flows for 2022 and between January 1, 2021, and December 31, 2021, according to the Foundations Act, the National Social Welfare Consortium Accounting and Financial Reporting Standards, the Business Entity Accounting Act, and the Regulation on Business Entity Accounting Handling, the provisions relating to the preparation of the financial statements and generally accepted accounting principles.



Description:

1. The charity donations of this association are based on the core value of inspiring love and promoting good social values, and every act of kindness is precious.
2. In 2022, 94% of individuals donated less than NT\$1,000 thanks to Tzu Chi volunteers for making regular visits to members, explaining the current state of Tzu Chi's cause, spreading love, making good use of technology to donate money, and harnessing the power of tiny money to achieve tremendous good.
3. Thanks to the altruism of enterprises and non-profit organizations, their donation amounts accounted for 8% in 2022. Together we will minimize suffering and create a common good for society.



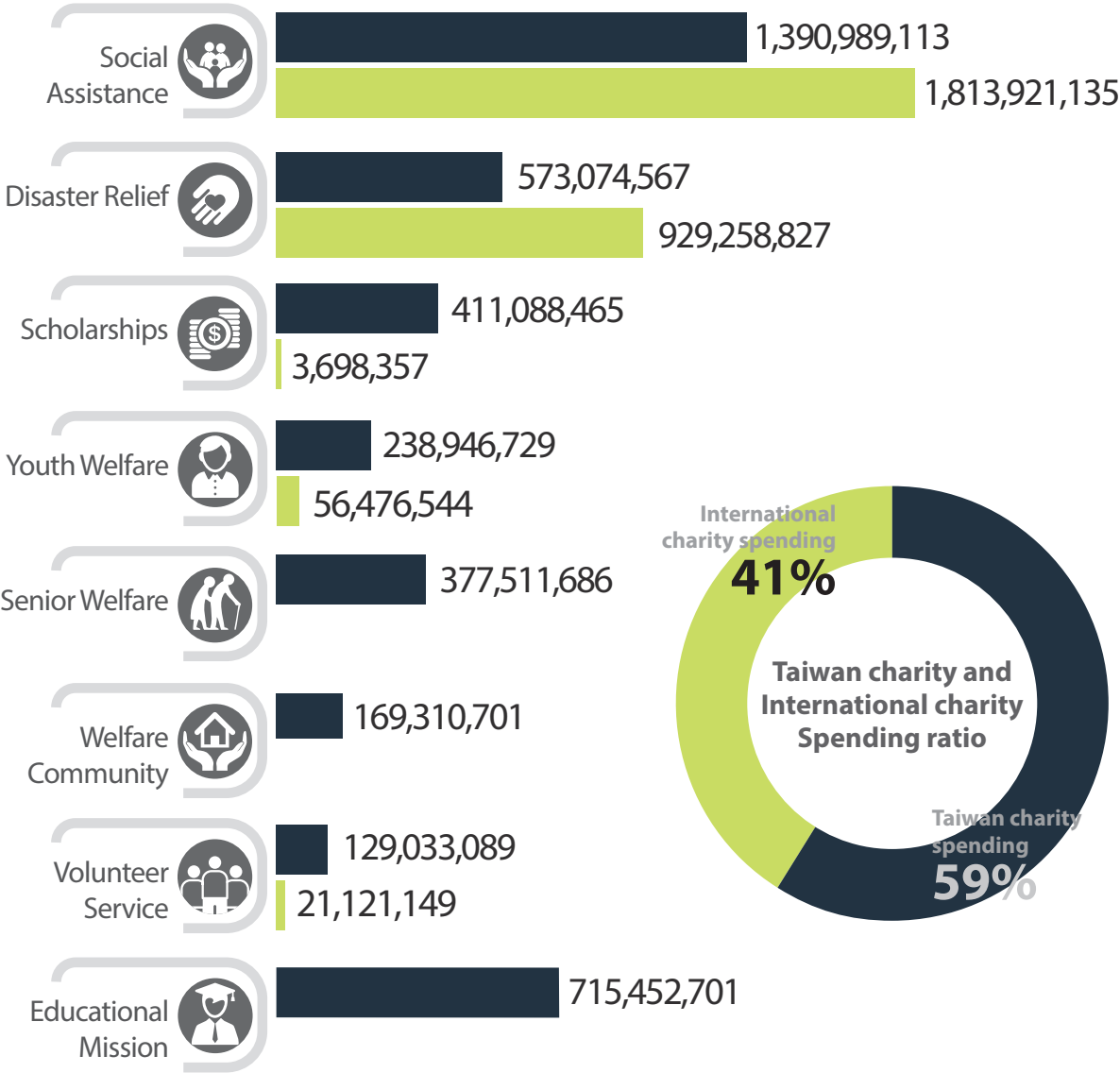
- I. Taiwan charity spending:
 01. Poverty alleviation in rural and remote villages: long-term relief for disadvantaged families and ethnic groups, home care, scholarships and student subsidies, emergency relief, health promotion, community development, etc.
 02. Long-term care services: promote long-term care services, construct care centers, provide care for the elderly living alone, build community care bases, etc.
 03. Youth public welfare development: promote youth public welfare development, professional talent cultivation, youth spiritual growth, public welfare service participation, etc.
 04. Welfare services for children, women, and the physically and mentally disabled; institutional care and financial subsidies; school resource support; nutritional support; etc.
 05. Disaster prevention, disaster preparedness, and disaster relief: disaster relief, reduction, and preparedness projects; R&D on disaster prevention and relief materials and equipment; and launched the "0918 Earthquake" disaster relief, housing, and school repair aid projects.
 06. Environmental sustainability program: promote environmental protection education, resource recycling, and reuse; new technology R&D; and start a net-zero carbon emission project.
 07. Taiwan's epidemic prevention and rescue assistance: BNT vaccine procurement donations, medical and epidemic prevention materials assistance, relief funds distribution, online learning equipment support, online course supplements, etc.
- II. International charity spending
 01. Execute international emergency humanitarian relief and post-disaster mid-to-long-term reconstruction work.
 02. Provide long-term assistance to displaced international refugees and living, schooling, and medical subsidies. Launched the Ukrainian Refugee Assistance Project in response to the Russia-Ukraine War in 2022.
 03. Aid international starvation, out-of-school and orphaned children, and impoverished families.
 04. Global epidemic prevention and rescue operations: overseas medical and epidemic prevention materials, medical equipment assistance, epidemic relief funds, resource assistance, etc.

Taiwan Charity and International Charity Spendings in 2022

• We are deeply grateful for the worldwide love and support to safeguard Taiwan. Taiwan has also expressed love and support for countries affected by major international disasters and poverty. (Excluding foreign and local self-expenses.)

■ Taiwan charity spending
■ International charity spending

Unit: NTD





“

In 2022, the British National Broadcasting Corporation (BBC) announced a list of 100 inspiring and influential women worldwide. Tzu Chi Master Cheng Yen, the "Buddhist philanthropist," was the only one from Taiwan on the list. The author pointed out in the introduction: Master Cheng Yen is regarded as one of the most influential figures in the development of modern Taiwanese Buddhism. She founded the humanitarian organization Tzu Chi Foundation, also known as the "Mother Teresa of Asia."

Over the past 56 years, Tzu Chi has grown from 50-cent donations to cooperation for the common good and corporate benefits. Master Cheng Yen has encouraged Tzu Chi members worldwide to invest in charity, inspiring everyone to do good deeds and love others. Tzu Chi and its members have "purified the people's hearts, created a peaceful society, and made the world free of disasters and worries" by serving as a flawless example of compassion and charity.

”

● **Charity is the essence of Tzu Chi.**

We are based in Taiwan for the benefit of the entire world.

We cross all barriers to expand the power of love.

We boldly go forward to those who need care.

Continue to spread the warmth bit by bit.



Invite you to join



Tzu Chi Global
Official Website



Tzu Chi
Official Line